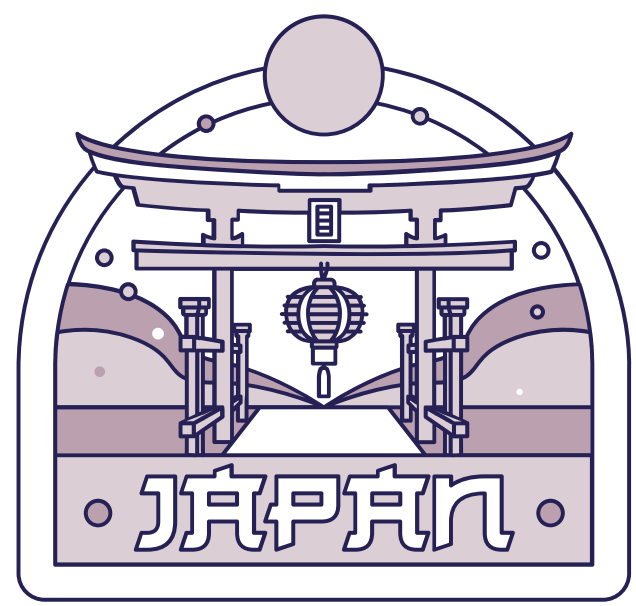


TOKYO TRIP

NOV 10,11
2024

Thank you for your visitation of AMWC Japan 2024



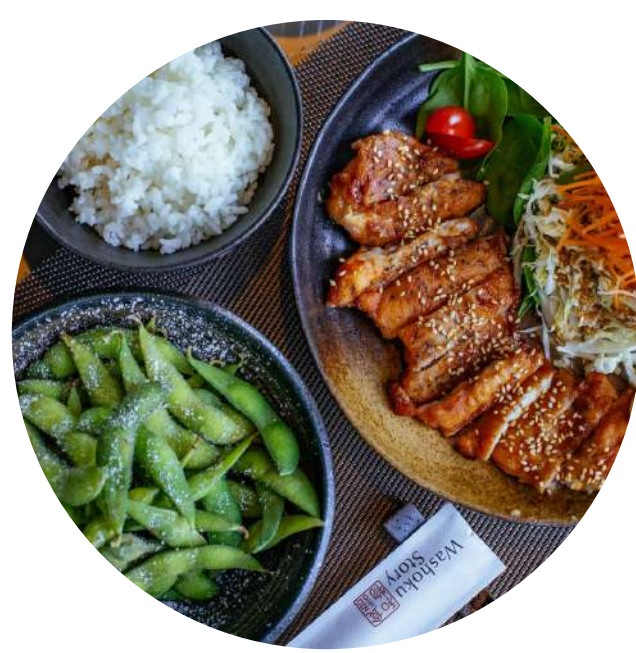
This is a guiding pamphlet for visitors of AMWC Japan who is interested in sightseeing in Tokyo. We wish this helps you on your trip.

TABLE OF CONTENTS

Enjoy Tokyo!



1. WHERE TO VISIT



2. WHERE TO EAT/DRINK



3. WHERE TO STAY



4. MUST BUY SOUVENIRS



AMWC Japan 2024
November 10th(Sun), 11th(Mon)
8:40-18:00
at ANA InterContinental Tokyo



Website



Instagram



Twitter



How to get to ANA InterContinental Tokyo?

-From Tokyo Station

From Tokyo Station, take the Yamanote Line bound for Shibuya/Shinjuku (outer loop), change the line at Shinbashi Station to the Ginza Line (bound for Shibuya), and get off at Tameike-Sanno Station. Walk for 4 minutes to go to ANA InterContinental Tokyo.

<https://www.google.com/maps/dir/Tokyo+Station,+1+Chome-9+Marunouchi,+Chiyoda+City,+Tokyo/InterContinental+-+ANA+Tokyo,+an+IHG+Hotel,+1+Chome-12-33+Akasaka,+Minato+City,+Tokyo+107-0052/@35.674401,139.7348021,14z/data=!3m1!5s0x60188b856b32058b:0xae9d100947252bc014m14!4m13!1m5!1m1!1s0x60188b856b89f700b:0x277c49ba34ed3812m2!1d139.7671248!2d35.6812362!1m5!1m1!1s0x60188b856c80b449:0x6995d155b41185af!2m2!1d139.7408307!2d35.6682896!3e3?entry=ttu>

-From Narita Airport

From Narita Airport Terminal 2 Station, take the Keisei Skyliner (paid express train bound for Keisei Ueno) and get off at Keisei Ueno Station; walk to JR Ueno Station (5-minute walk) and take the Ginza Line bound for Shibuya. Get off at Tameike-Sanno Station. Walk for 4 minutes to go to ANA InterContinental Tokyo.

[https://www.google.com/maps/dir/Narita+Airport+\(NRT\),+1-1+Furugome,+Narita,+Chiba/InterContinental+-+ANA+Tokyo,+an+IHG+Hotel,+1+Chome-12-33+Akasaka,+Minato+City,+Tokyo+107-0052/@35.7352349,139.73611,10z/data=!3m1!5s0x60188b856b32058b:0xae9d100947252bc014m14!4m13!1m5!1m1!1s0x6022f379d1bd3757:0xd56e29a162771aa1!2m2!1d140.3928548!2d35.7721823!1m5!1m1!1s0x60188b856c80b449:0x6995d155b41185af!2m2!1d139.7408307!2d35.6682896!3e3?entry=ttu](https://www.google.com/maps/dir/Narita+Airport+(NRT),+1-1+Furugome,+Narita,+Chiba/InterContinental+-+ANA+Tokyo,+an+IHG+Hotel,+1+Chome-12-33+Akasaka,+Minato+City,+Tokyo+107-0052/@35.7352349,139.73611,10z/data=!3m1!5s0x60188b856b32058b:0xae9d100947252bc014m14!4m13!1m5!1m1!1s0x6022f379d1bd3757:0xd56e29a162771aa1!2m2!1d140.3928548!2d35.7721823!1m5!1m1!1s0x60188b856c80b449:0x6995d155b41185af!2m2!1d139.7408307!2d35.6682896!3e3?entry=ttu)

-From Haneda Airport

From Haneda Airport Terminal 3 Station, take the Airport Line Airport Express bound for Narita Airport and get off at Shinbashi Station. Walk 6 minutes to JR Shinbashi Station and take the Ginza Line bound for Shibuya. Get off at Tameike-Sanno Station. Walk for 4 minutes to go to ANA InterContinental Tokyo.

[https://www.google.com/maps/dir/Haneda+Airport+\(HND\),+Haneda+Airport,+Ota+City,+Tokyo/InterContinental+-+ANA+Tokyo,+an+IHG+Hotel,+1+Chome-12-33+Akasaka,+Minato+City,+Tokyo+107-0052/@35.6075297,139.6692592,12z/am=t/data=!3m1!5s0x60188b856b32058b:0xae9d100947252bc014m14!4m13!1m5!1m1!1s0x6018640ba43192e3:0xd32c3a9d146f8df!2m2!1d139.7798386!2d35.5493932!1m5!1m1!1s0x60188b856c80b449:0x6995d155b41185af!2m2!1d139.7408307!2d35.6682896!3e3?entry=ttu](https://www.google.com/maps/dir/Haneda+Airport+(HND),+Haneda+Airport,+Ota+City,+Tokyo/InterContinental+-+ANA+Tokyo,+an+IHG+Hotel,+1+Chome-12-33+Akasaka,+Minato+City,+Tokyo+107-0052/@35.6075297,139.6692592,12z/am=t/data=!3m1!5s0x60188b856b32058b:0xae9d100947252bc014m14!4m13!1m5!1m1!1s0x6018640ba43192e3:0xd32c3a9d146f8df!2m2!1d139.7798386!2d35.5493932!1m5!1m1!1s0x60188b856c80b449:0x6995d155b41185af!2m2!1d139.7408307!2d35.6682896!3e3?entry=ttu)

TOKYO SIGHTSEEING LIST

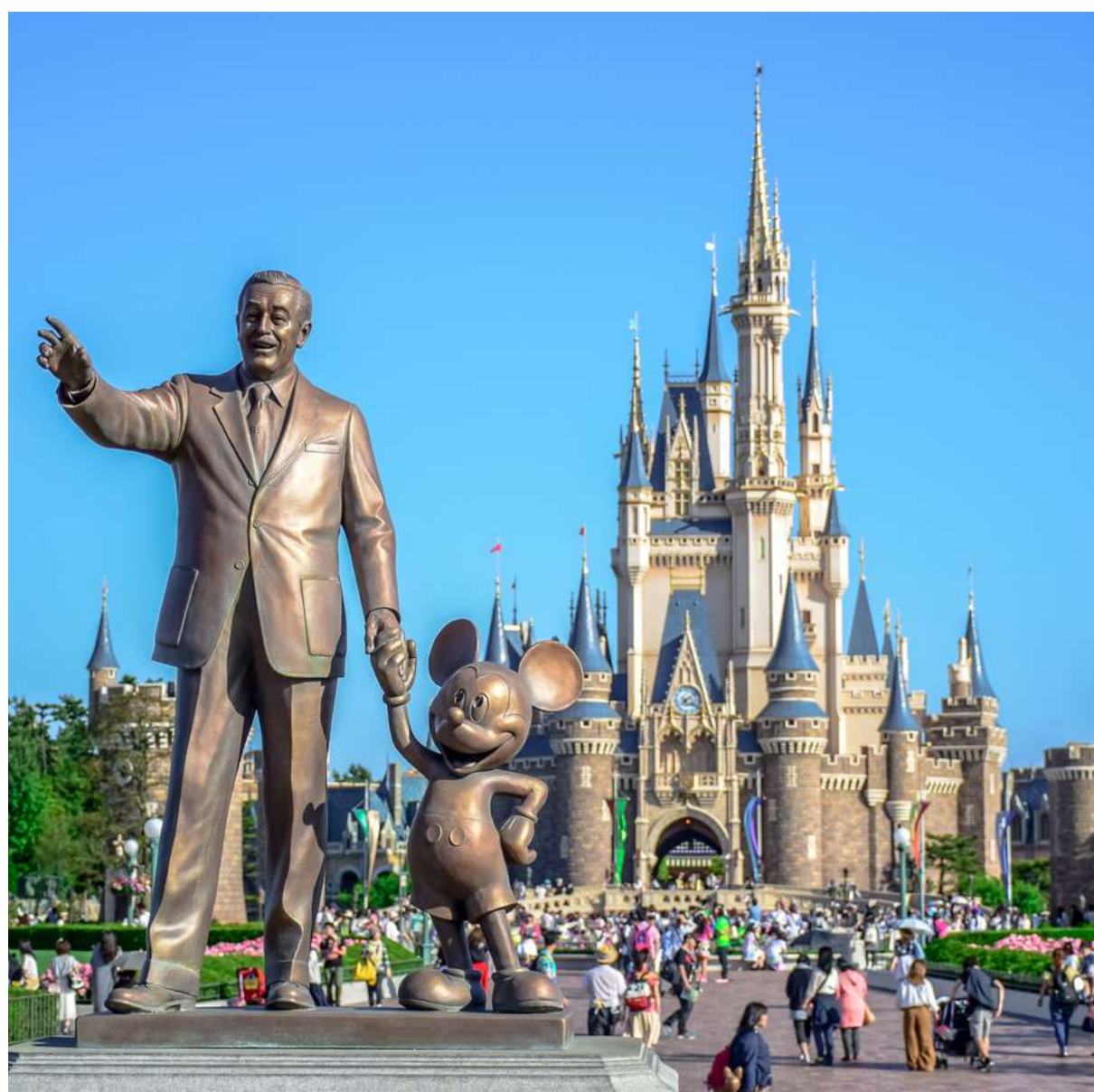
Various tourist spots are introduced here,
divided into different genres by colors.

FOR FAMILY

FOR ADULTS

FOR ART LOVERS

FOR ANIME LOVERS



TOKYO DISNEY LAND/SEA

Tokyo Disneyland is a Disney theme park located in Urayasu, Chiba, Japan. This charming park is filled with Walt Disney's creativity and dream world, and offers a variety of attractions, shows, and entertainment. Visitors can also enjoy special seasonal events and parades, making for a full day of fun. For families and Disney fans, a wonderful and memorable experience awaits.

Address:
1-1 Maihama, Urayasu-shi, Chiba 279-0031
Nearest Sta:
Maihama Station

<https://www.tokyodisneyresort.jp/en/index.html>

For more information about Tokyo tourist attractions that we are unable to introduce in this pamphlet, please see the linked website.

<https://www.travelonthebrain.net/places-to-visit-in-tokyo/>

<https://alljapantours.com/japan/anime/anime-spots/places-to-go-in-tokyo-for-anime-fans/>

SIGHTSEEING

Around Asakusa

FOR FAMILY

FOR ADULTS

FOR ART LOVERS

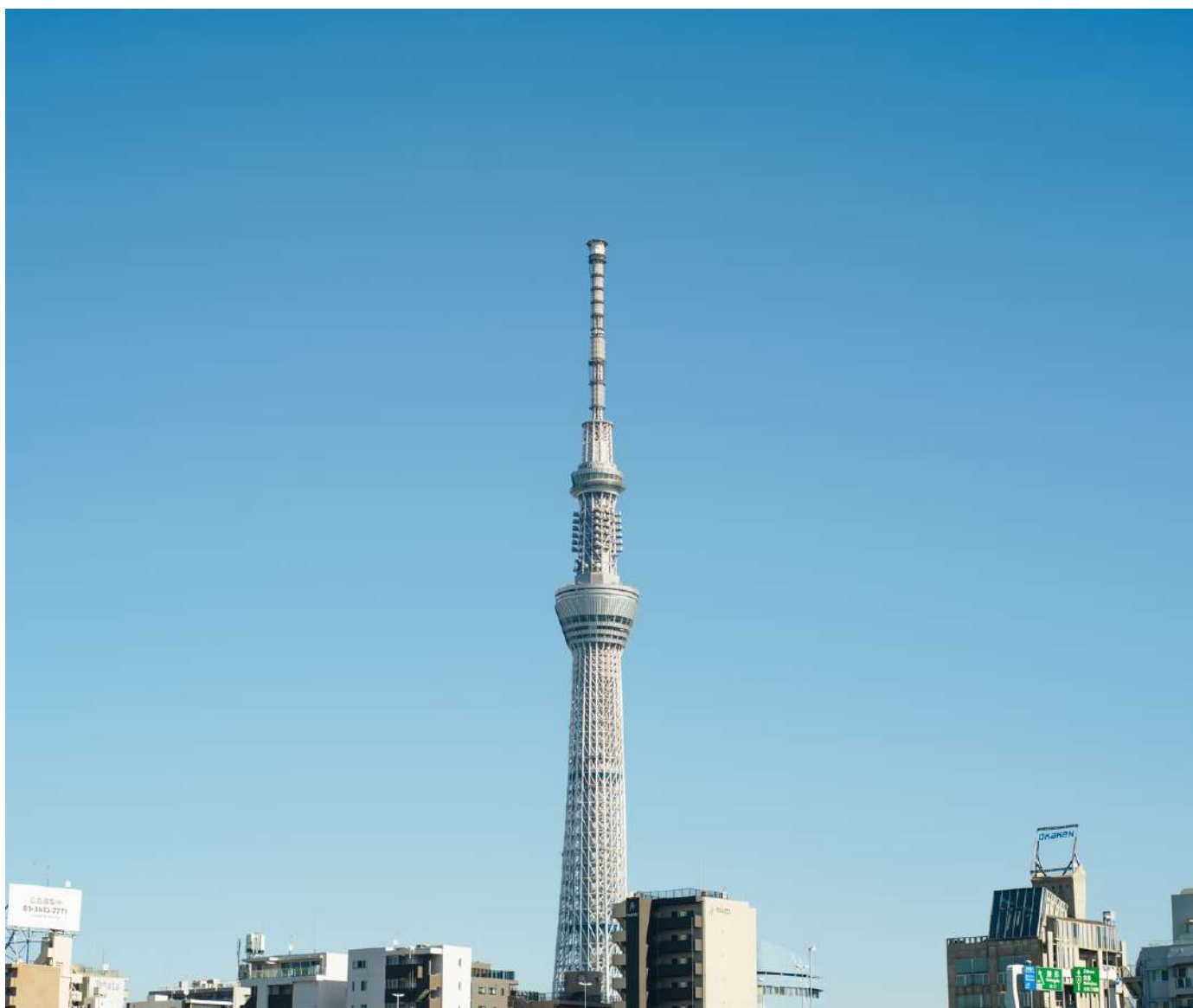
FOR ANIME LOVERS

ASAKUSA, SENSOUJI

Senso-ji Temple, the oldest temple in Tokyo, is a must-see sightseeing spot in Tokyo. The Nakamise Street leading from Kaminarimon is lined with long-established souvenir and Japanese confectionery stores, as well as sweet stores perfect for eating and walking. The best place to try Asakusa's specialty, ningyoyaki (doll-shaped pancakes). One of the best ways to enjoy Asakusa is to compare the taste of different stores.

Address: 2-3-1 Asakusa, Taito-ku, Tokyo
Nearest Sta.: Asakusa Station

<https://www.senso-ji.jp/english/>



TOKYO SKY TREE & SORAMACHI

The world's tallest freestanding radio tower at 634 meters. Observation decks are located at 350 m and 450 m above the ground, and from the observation deck at 450 m, visitors can see as far as 75 km away on a clear day. At the base of the tower is Tokyo Solamachi, a commercial facility with more than 300 stores, where you can buy "Q-pot" items, a very popular sweets motif accessory brand.

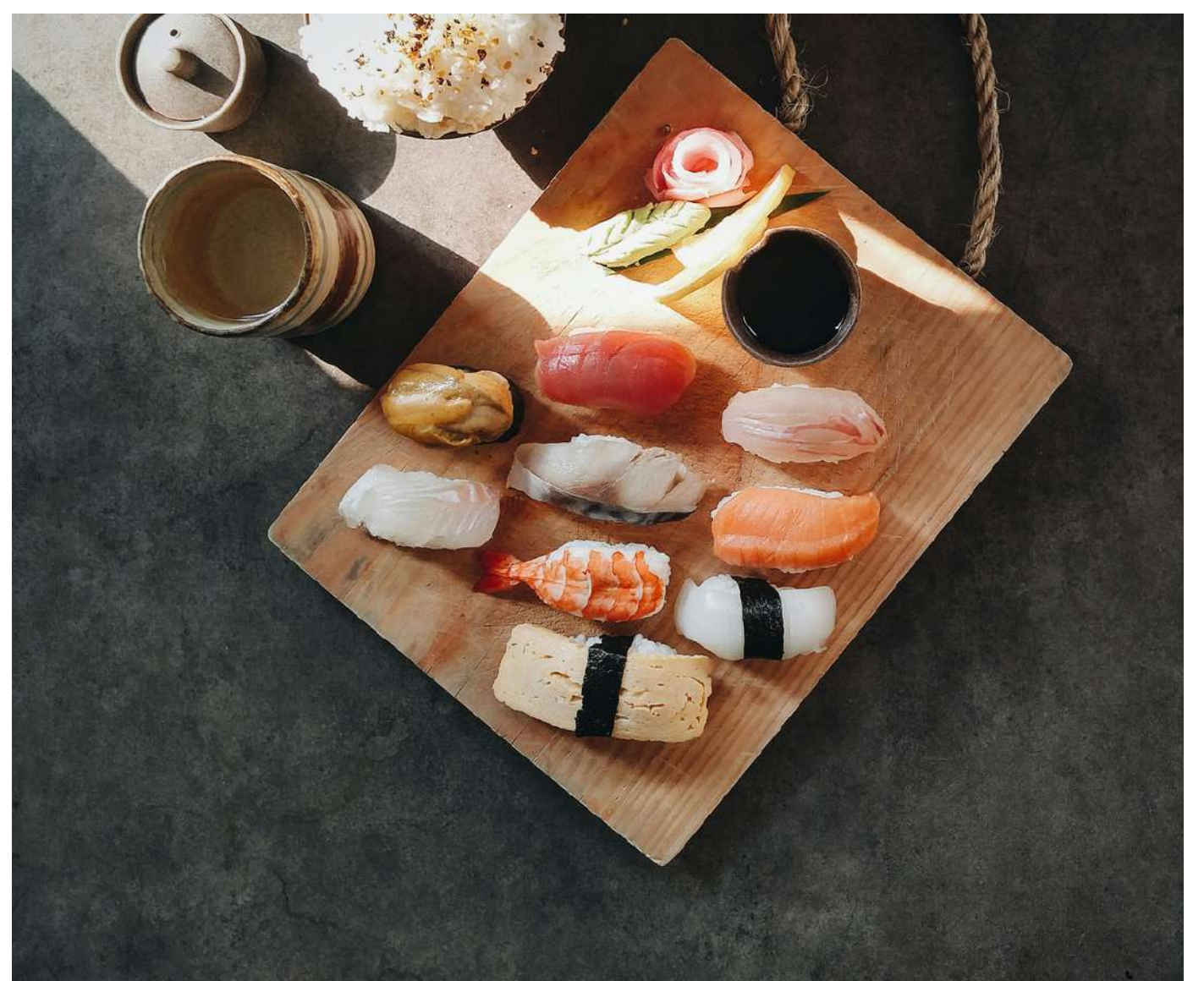
Address: 1-2, Oshiage 1-chome, Sumida-ku, Tokyo
Nearest Sta.: Oshiage (Skytree-mae) Station
Tokyo Skytree station

<https://www.tokyo-skytree.jp/en/>
<https://www.tokyo-solamachi.jp/en/>

TOYOSU MARKET

As soon as you enter Yasaka Koshindo, you will see many colorful objects hanging in the main hall and other places. These are called "kukuri monkey" or lucky charms. The monkey running around is compared to human "desire," and the meaning is that the monkey is bound by its arms and legs so that it cannot move, thereby suppressing desire. Many people wear kimonos and take pictures with the colorful kukuri monkeys in the background, making it a popular photo spot for taking fantastic and cute pictures.

Address: 6-6-1 Toyosu, Koto-ku, Tokyo
Nearest Sta.: Ichiba-mae Station, Toyosu station, Shimbashi station



SIGHTSEEING

Around Roppongi

FOR FAMILY

FOR ADULTS

FOR ART LOVERS

FOR ANIME LOVERS

ART AQUARIUM GINZA

The Goldfish Aquarium is a fantastic space where beautiful goldfish swim. Visitors can see goldfish of various varieties and colorful patterns, and their beauty will soothe their hearts. Their shimmering form and graceful swimming in the aquarium will make you forget the hustle and bustle of daily life.

Exhibitions and events related to goldfish are also held for visitors to enjoy with family and friends. It is an attractive spot where visitors can experience healing and relaxation through the beauty and serenity of goldfish.

Address: 9F entrance, Mitsukoshi Shinkan, 4-6-16
Ginza, Chuo-ku, Tokyo
Nearest Sta.: Ginza Sta
<https://artaquarium.jp/>



HAPPOEN

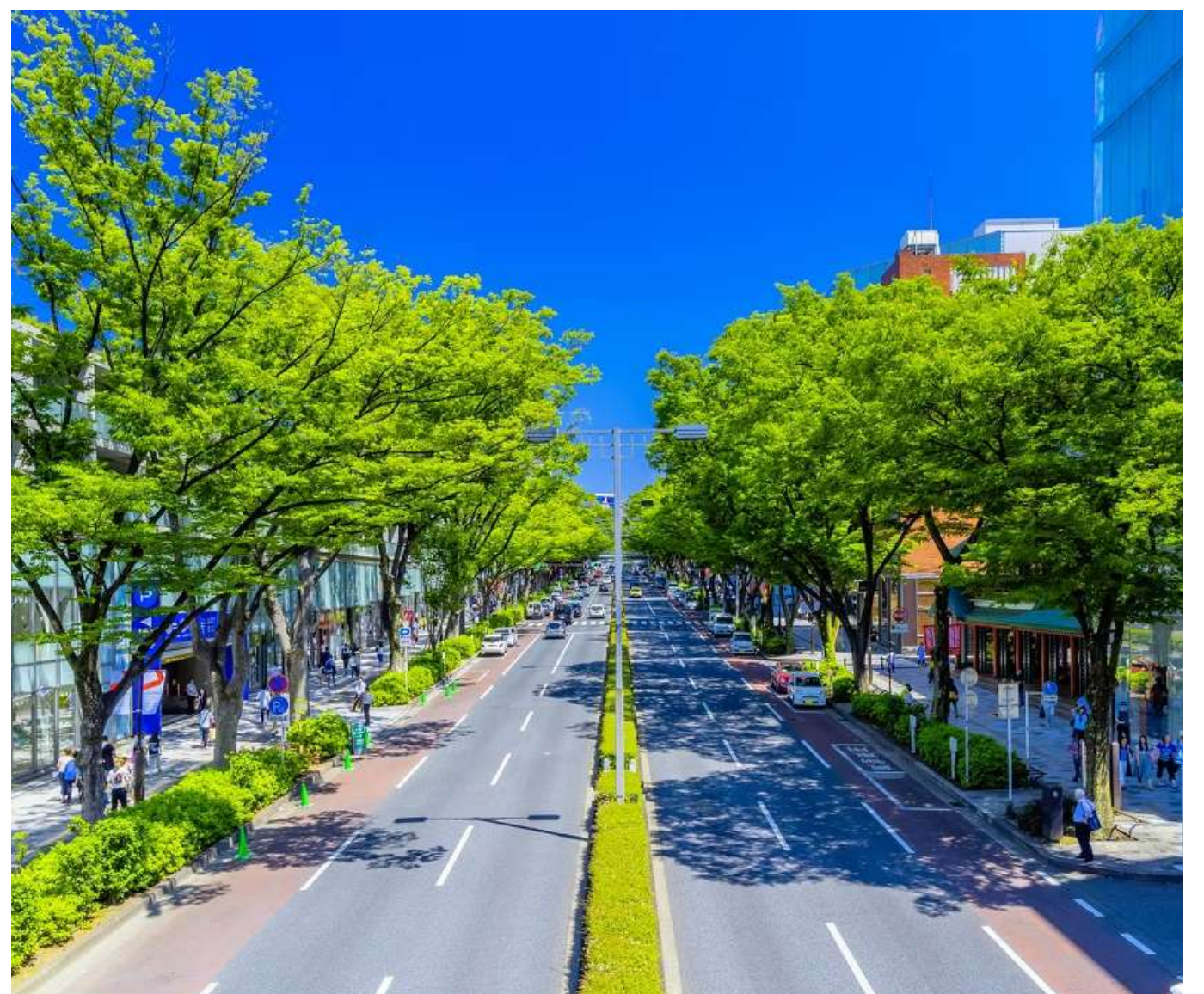
Guests using Happon's facilities (Restaurants) are free to stroll through the beautiful Japanese garden. On some days, guests can enjoy matcha green tea and sweets at the garden's tea house, Yumean (at an additional charge). It is a circular garden with a pond at its center. The historical buildings, 500-year-old bonsai trees, and bamboo grove along the water's edge are all in perfect harmony with the beautifully recreated natural setting of the Japanese garden.

Address: 1-1-1 Shirokanedai, Minato-ku, Tokyo
Nearest Sta: Shirokanedai Sta

OMOTESANDO

Omotesando's attractions are manifold. First, there is the sophisticated shopping area, home to world-class brands and creative fashion boutiques. In addition, the beautiful streets and avenues are surrounded by trees, making just strolling around the area enjoyable. The area also has many cafes and restaurants, making it an attractive place for foodies. Furthermore, cultural facilities and art museums are scattered around Omotesando, allowing visitors to experience art and history.

Address: 4-12 Jingumae, Shibuya-ku, Tokyo
Nearest Sta.: Omotesando Station
<https://www.omotesandohills.com/en/>



SIGHTSEEING

Around Roppongi

FOR FAMILY

FOR ADULTS

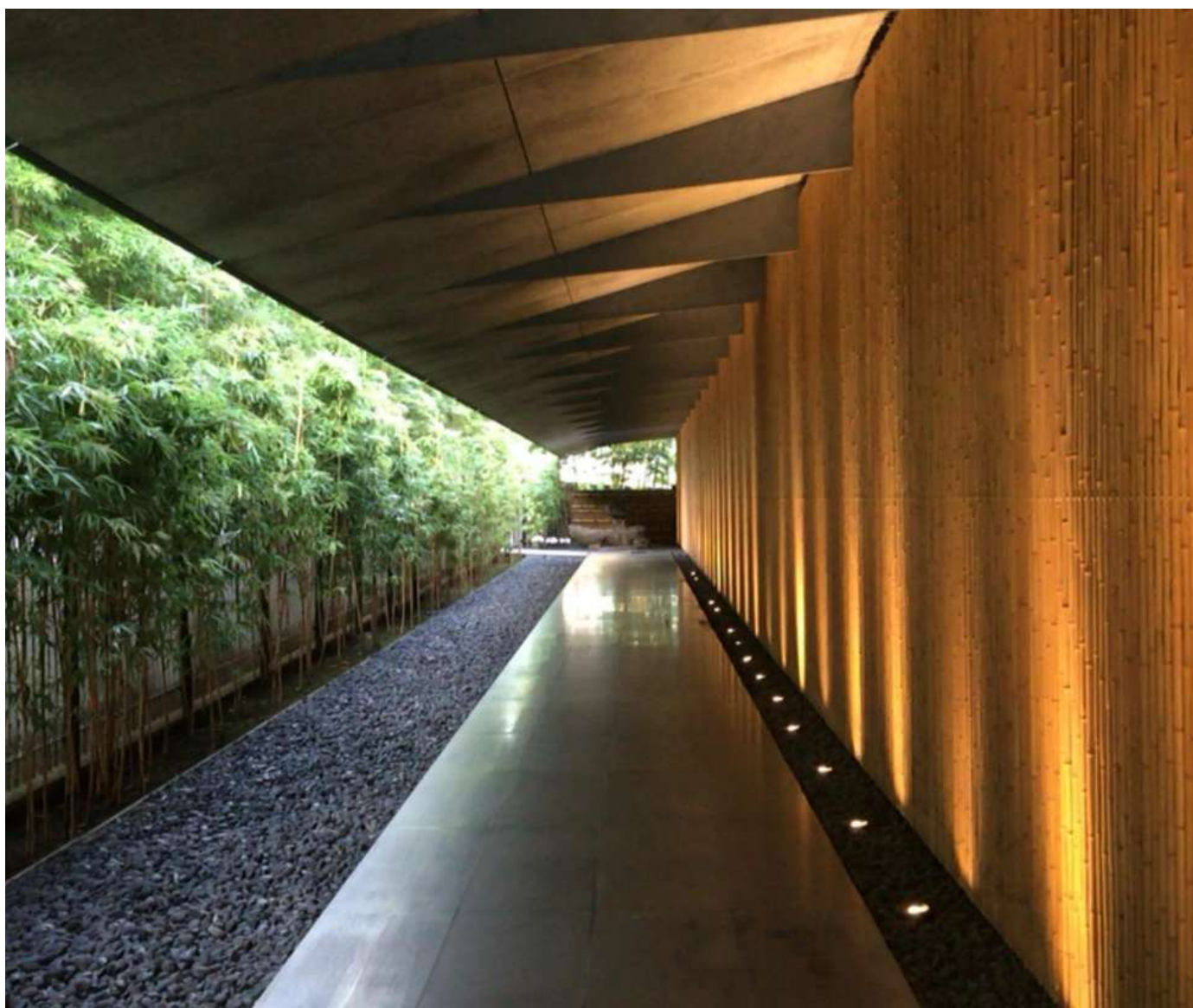
FOR ART LOVERS

FOR ANIME LOVERS

ROPPONGI HILLS

The Roppongi Hills area first catches the eye at a glance with its overwhelming skyscrapers. From the observation deck, visitors can enjoy beautiful night views of Tokyo and the city center. In addition, there is a wide range of shopping facilities, restaurants, and cafes where visitors can enjoy top brands and gourmet foods. Furthermore, there are museums and galleries where visitors can experience art and culture. There are also many events and exhibitions held on a regular basis, so you can always discover something new and fascinating.

Address: 6-10-1 Roppongi, Minato-ku, Tokyo
 Nearest Sta.: Roppongi Station
<https://www.roppongihills.com/en/>



NEZU ART MUSEUM

It was established to display the collection of Kaichiro Nezu, a businessman who was also an antique collector. With the addition of works acquired after Mr. Nezu's death, the museum's collection now numbers 7,613 items, including 7 national treasures, 88 important cultural properties, and 95 important art objects (*as of December 31, 2021). A wide range of oriental antiquities, including Chinese bronzes from as far back as the 10th century B.C., paintings, Buddhist art etc. are on display. The beautiful garden, with its seasonal expressions, retains traces of the Nezu family's private residence days.

Address: 6-5-1 Minami-Aoyama, Minato-ku, Tokyo
 Nearest Sta.: Omotesando Station
<https://www.nezu-muse.or.jp/en/index.html>

THE NATIONAL ART CENTER, TOKYO

Opened in 2007, it is the fifth national art museum in Japan. With approximately 14,000 square meters of exhibition space, it is one of the largest museums in Japan. It does not have a collection, but rather serves as an art center that aims to collect, present, and provide information and materials related to art and to promote education. The museum store "Souvenir from Tokyo" proposes new designs and art from a Tokyo perspective, without being limited by name recognition or genre, and is a must-see for art lovers.

Address: 22-2, Roppongi 7-chome, Minato-ku, Tokyo
 Nearest Sta: Nogizaka Station
<https://www.nact.jp/english/index.html>



SIGHTSEEING

FOR FAMILY

FOR ADULTS

FOR ART LOVERS

FOR ANIME LOVERS

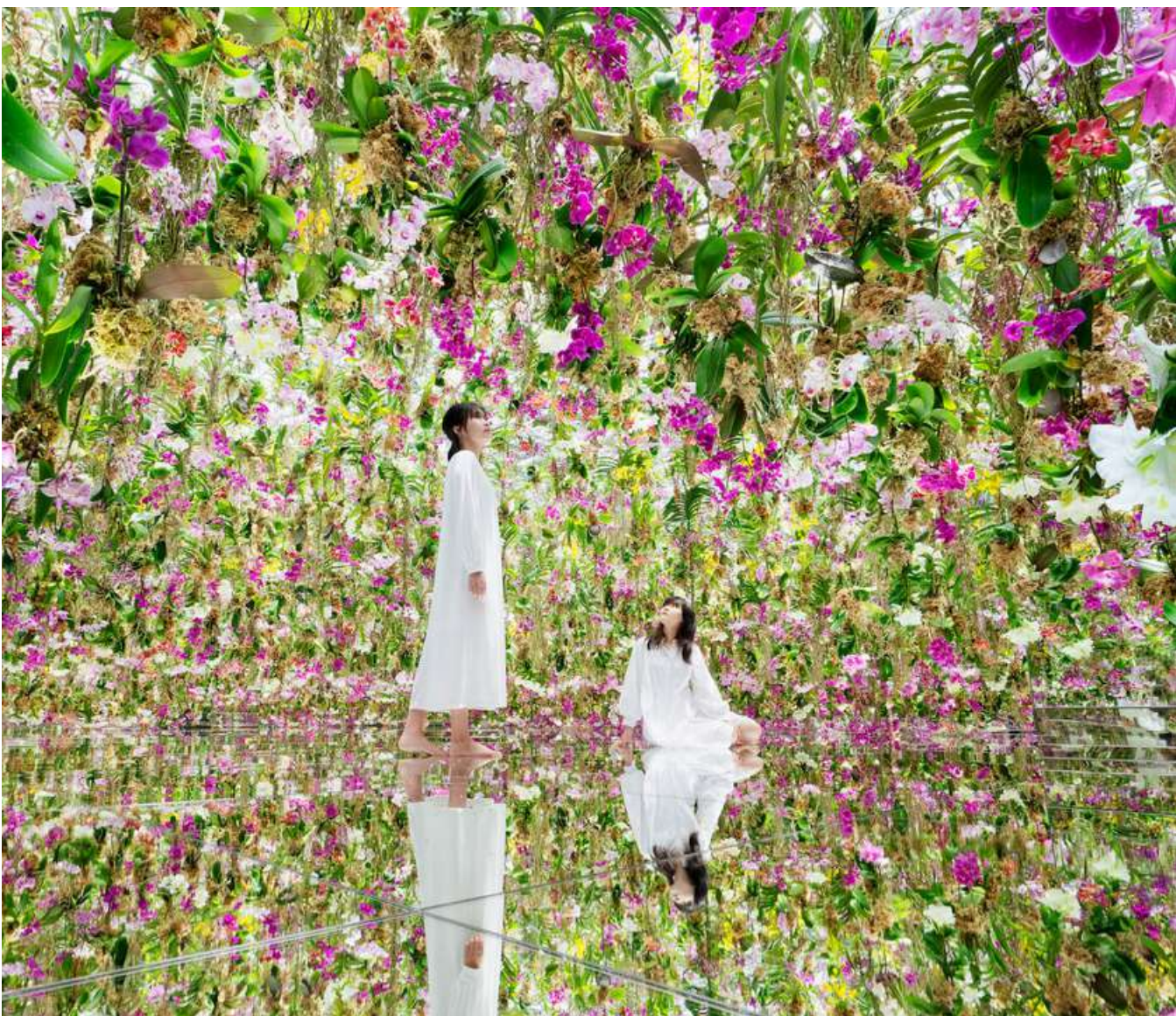
MITAKA NO MORI GHIBLI MUSEUM OF ART

A museum where Hayao Miyazaki, the animation film director of Studio Ghibli, gave form to his ideas. The museum building is strangely shaped, and even inside, it is a mysterious space. The permanent exhibition room is divided into five small rooms, and as you tour the rooms, you can feel the process of creating a movie through the imagination of the creator. Entrance to the museum is by appointment only.

Address: 1-1-83, Shimorenjaku 1-chome, Mitaka-shi, Tokyo

Nearest Sta: Mitaka Station

<https://www.ghibli-museum.jp/en/>



TEAMLAB

TeamLab explores new realms of expression by fusing digital technology and art. Their work combines elements of video, music, programming, and sensor technology to create immersive experiences. For example, in their exhibitions, the images and music may change in response to the audience's movement and touch. In addition, many of their works are very beautiful and incorporate elements such as forests, flowers, and water.

Address: 6-1-16 Toyosu, Koto-ku, Tokyo

Nearest Sta.: Shintoyosu station

<https://www.team-lab.com/en/about/>

EDO-TOKYO OPEN AIR ARCHITECTURAL MUSEUM

An open-air museum that exhibits buildings constructed from the Edo period to the mid-Showa period. It was built to preserve for future generations the buildings that could no longer be preserved despite their high historical value, by relocating them. In addition to the buildings, there are also exhibits such as relocated lanterns, electric lights, and Showa-era streetcar vehicles.

Address: 3-7-1 Sakura-machi, Koganei-shi, Tokyo

Nearest Sta.: Musashi Koganei Station

<https://www.tatemonoen.jp/english/>



SIGHTSEEING

Around IKEBUKURO

FOR FAMILY

FOR ADULTS

FOR ART LOVERS

FOR ANIME LOVERS

AKIHABARA

Akihabara is a lively shopping district with a wide range of electronics retailers, from small stalls to large stores like Yodobashi Multimedia Akiba. There is also the Tokyo Anime Center, which focuses on exhibits and souvenirs, and the 10-story hall, with toys, trading cards, and collectibles, as well as stores specializing in manga, anime, and video games. Maid cafes with staff dressed as maids and butlers serving tea and desserts are also a specialty.

Nearest Sta: Akihabara Sta



KOUKYO

"Koukyo", the Imperial Palace, is the residence of the Emperor of Japan and his Imperial Family. It is currently located in the southern part of Chiyoda-ku, Tokyo. The total area of the palace is equivalent to approximately 20% of Chiyoda-ku. It is also the former residence of the Tokugawa Shogun (Edo Castle) became the Imperial Palace in the first year of Meiji (1868). Although visitors cannot enter the actual place where the emperor resides, the garden and some buildings can be visited.

Address: 1-1 Chiyoda, Chiyoda-ku, Tokyo

Nearest Sta: Nijubashimae Station

<https://sankan.kunaicho.go.jp/english/index.html>

SUNSHINE AQUARIUM

An urban high-rise aquarium located on the roof of a high-rise building in Ikebukuro, based on the concept of an "oasis in the sky". The aquarium has gained popularity for its unique exhibition method, in which visitors look up at the creatures in tanks set up above their heads. Penguins swimming against the backdrop of buildings look as if they are flying in the sky over Tokyo. It is a magical sight that makes you want to take a picture of it. The seasonal special exhibitions are always unique and interesting and are a must see for biology lovers.

Address: Rooftop of Sunshine City World Import Mart Building, 3-1 Higashi-Ikebukuro, Toshima-ku, Tokyo

Nearest Sta.: Ikebukuro Station

<https://sunshinecity.jp/en/aquarium/>



CAFE LIST AROUND SHIBUYA

AND PEOPLE JINNAN

Located in Jinnan, Shibuya-ku, the café dining room is dark inside and is surrounded by a stylish, atelier-like atmosphere with beautiful lighting. The many sofa seats are also a recommended point. Please enjoy a casual, everyday moment with a glass of wine or cocktail in hand. We recommend this restaurant for lunch and café use as well.

https://www.andpeople.co.jp/jinnan_concept.html

<Adress>

6F VORT Shibuya briller, 1-20-5 Jinnan, Shibuya-ku, Tokyo

<Business Hours>

12: 00~23: 00 (L.O.22:30)



KISSA STELLA

Opened in October 2020 after renovating a 48-year-old coffee shop, this old yet new coffee shop offers a relaxing and calming experience, forgetting the hustle and bustle of the city at the moment you savor each carefully brewed cup of coffee in the store. The most popular item is a pudding in the shape of a Japanese coffee shop. The secret of its popularity is its smooth texture and gentle, moderate sweetness.

<https://satella.coffee/>

<Adress>

1F Aoyama Seven Heights, 1-7-5 Shibuya, Shibuya-ku, Tokyo

<Business Hours>

[Mon-Tue, Sat-Sun]

11:00-19:00 (18:30 lo)

[Fri.] 11:00-22:00 (21:30 lo)



CAFE LIST AROUND HARAJUKU

WORLD BREAKFAST ALLDAY

A café serving breakfast foods from around the world. Traditional breakfasts are disappearing gradually, but they are filled with history, culture, nutrition, and hints to make life more enjoyable. You can enjoy authentic breakfast prepared with the help of local people living in Tokyo.

<https://www.world-breakfast-allday.com/>

<Adress>

1F, 3-1-23 Jingumae, Shibuya-ku, Tokyo

<Business Hours>

7:30 - 20:00 (l.o 19:00)



Q-POT. CAFE

The concept is that Q-pot. accessories can actually be eaten at the café, which is owned by the sweets accessory brand Q-pot. Reservations are necessary due to its popularity for afternoon tea and seasonal collaborations. The interior is decorated in a Kawaii sweets-like furnitures.

<http://www.q-pot.jp/eng/>

<https://www.q-pot.jp/shop/cafe/?eng=1>

<Adress>

1F, 3-4-8 Jingumae, Shibuya-ku, Tokyo

<Business Hours>

11:00~19:00(L.O.18:30)



CAFE LIST AROUND TOKYO STATION

CAFE 1894

The location of the Mitsubishi Ichigokan Museum Café 1894 was once used as a bank sales room. In restoring this space, people used photographs that were taken at the time of the Mitsubishi Ichigokan's completion in 1894, as well as drawings and preserved materials.

The restoration of this space was based on photographs, drawings, and preserved materials that are believed to have been taken at the time of the Mitsubishi Ichigokan's completion in 1894.

<https://mimt.jp/english/cafe1894/>

<Adress>

Mitsubishi Ichigokan Museum 1F, 2-6-2
Marunouchi, Chiyoda-ku, Tokyo

<Business Hours>

11:00-22:00 (L.O.21:00)



TSUBAKIYA SABOU -MARUBIRU

This upscale coffee shop offers coffee made from home-roasted beans and brewed with a siphon. The Taisho-romantic interior and attentive service make for an elegant experience.

<https://www.towafood-net.co.jp/shop/cafe/>

<Adress>

Marunouchi Building 5F, 2-4-1 Marunouchi,
Chiyoda-ku, Tokyo

<Business Hours>

11:00-23:00 (L.O. 22:30)



CAFE LIST AROUND ASAKUSA

TAISHO ROMAN KAN CAFE

The café is characterized by its retro coffee shop motif. There are many cute photo spots in the store. Fruit punch and melon soda floats are famous. The cafe is very popular among young women, as kimono rentals are available at 2nd floor.

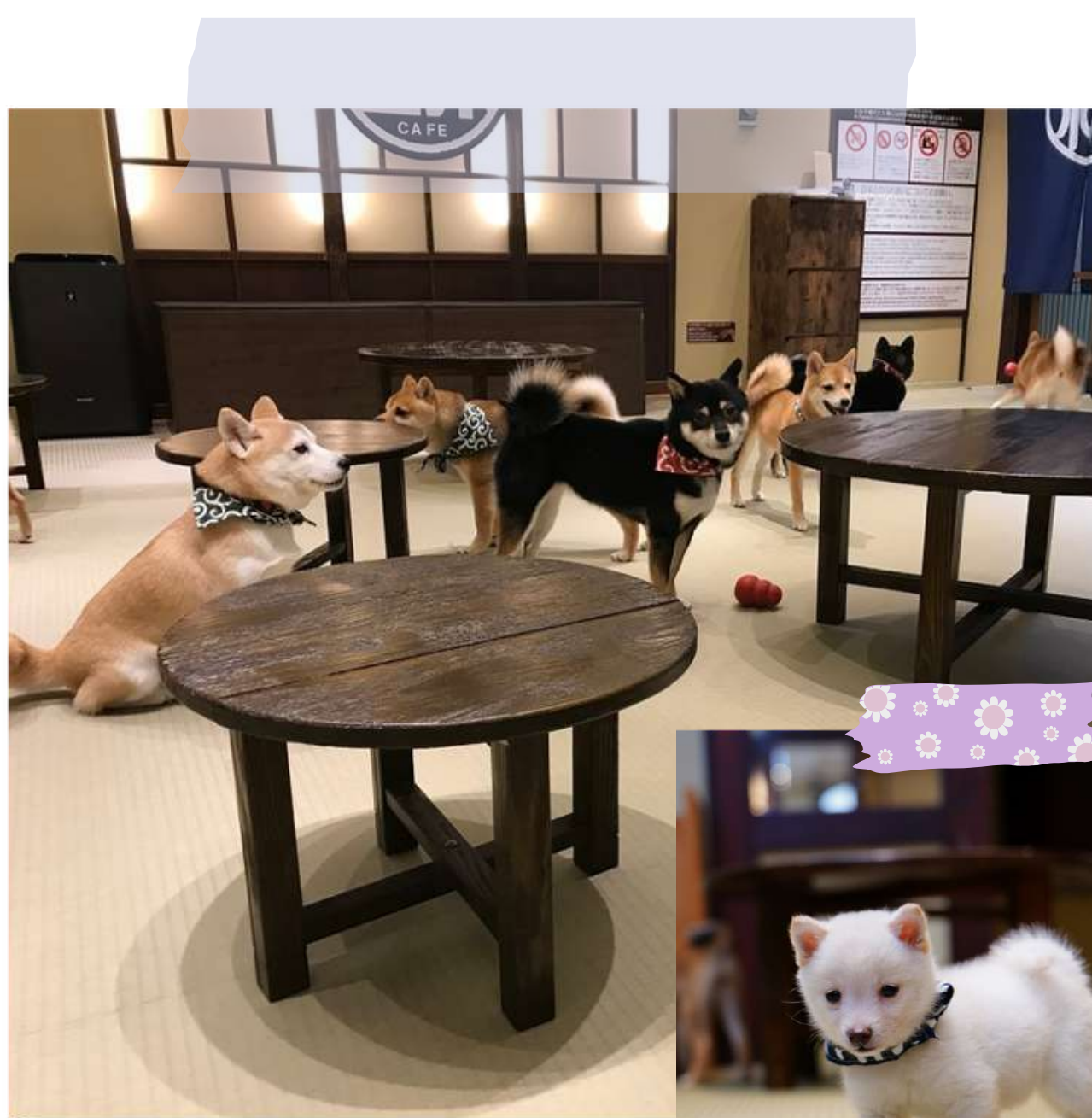
<https://www.asakusa-romankan.com/en>

<Adress>

1F Taisho-Roman-Kan, 2-2-4 Asakusa, Taito-ku, Tokyo

<Business Hours>

10:00-18:30(L.O.18:00)



ASAKUSANO MAMESHIBA CAFE

A cafe where you can touch cute mame-shiba. In the retro Showa-style store, mame-Shibas with arabesque bandanas around their necks are waiting for you. You can enjoy petting and having your picture taken with them with a drink. We recommend reservation before visiting.

<https://owls-cats-forest.com/free/mameshiba-asakusa>

<Adress>

Asakusa 1-29-3 Asakusa, Taito-ku, Tokyo 111-0032
1-29-3 Asakusa, Taito-ku, Tokyo

<Business Hours>

(Weekdays) 12:15AM - 6:00PM

(Saturday, Sunday and holidays) 11:00AM - 6:40PM

CAFE LIST AROUND ASAKUSA

KUKURIHIME COFFEE

A cafe where you can enjoy Japanese parfaits and original nut butters with home-roasted coffee, where you can fully enjoy the marriage of Japanese and Western flavors. We recommend enjoying a miniature afternoon tea set in the stylish Japanese-style store.

<https://www.kukurihimecoffee.jp/>

<Adress>

1-18-8 Asakusa, Taito-ku, Tokyo

<Business Hours>

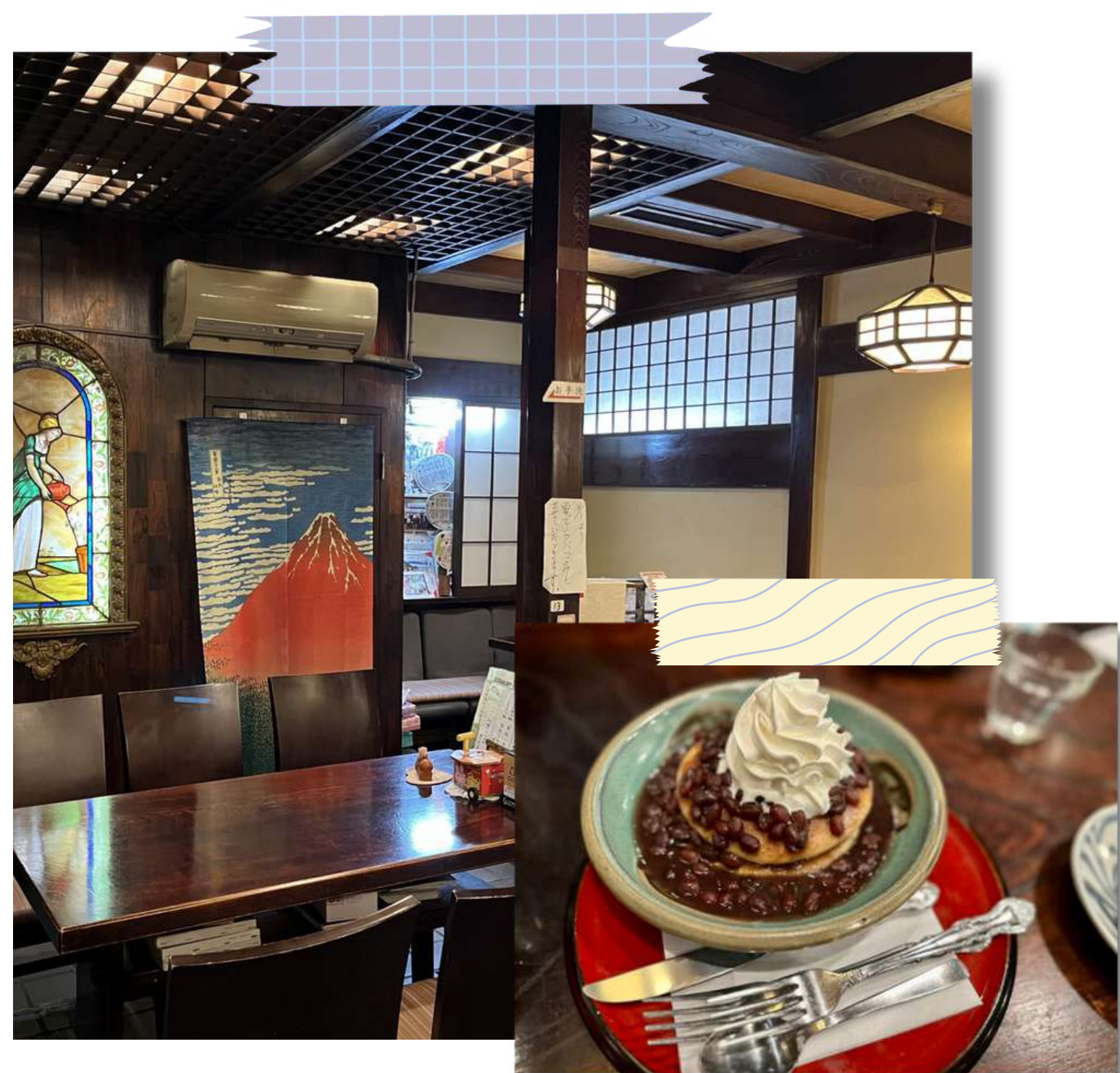
Mon, Wed-Fri:

12:00-20:00(L.O.19:00)

Weekends and holidays:

11:00-20:00(L.O.19:00)

Closed: Tuesday



JUNKISSA MOUNTAIN

This café offers Japanese-style sweets in a nostalgic atmosphere. With the recent boom in retro cafes, cream soda is often ordered, especially by young women. Anmitsu (bean jam filled with red bean paste) and fruit parfaits are also popular.

<https://onl.bz/VrmcxBA>

<Adress>

1-8-2 Asakusa, Taito-ku, Tokyo 1F

<Business Hours>

11:30 - 20:00

CAFE LIST

AROUND ROPPONGI, EBISU

SHIRONONIWA

A stylish rooftop café and restaurant on the top floor of Atre building, directly connected to Ebisu Station. You can spend a relaxing time overlooking the hanging garden. Even though it is a café, lunch is popular, and all lunch menus come with an all-you-can-drink package.

<http://www.bistro-shiro.com/shirononiwa/#shop>

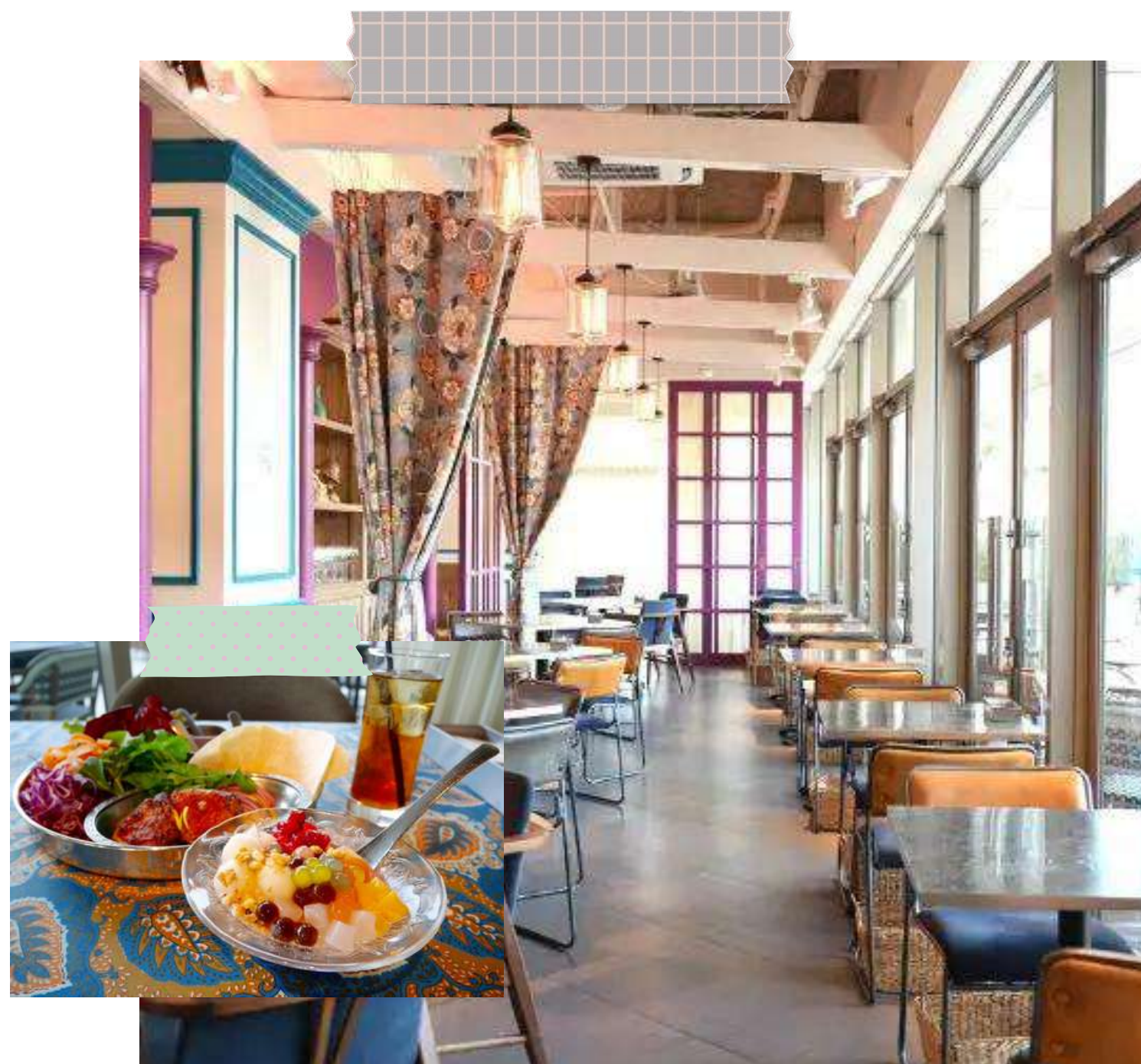
<Adress>

Atre Ebisu Nishikan 8F, 1-6-1 Ebisu-Minami, Shibuya-ku, Tokyo

<Business Hours>

11:00~17:00 (L.O. 15:30)

17:00~23:00 (L.O. 22:00)



ANALOG CAFE / LOUNGE TOKYO

Analog Cafe Lounge Tokyo is located on the top floor of a long-established building not far from the west exit rotary of Ebisu Station. The atmosphere is stylish and suitable to be called a "hideout". The entrance is a chic and relaxing antique-style space, while the back of the building is a cozy modern Japanese-style space with a transom and shoji screens. ※No entry under 20 years old, as smoking is not prohibited.

<Adress>

Toa Ebisu Building 4F, 1-8-3 Ebisu-Minami, Shibuya-ku, Tokyo

<Business Hours>

12:00-23:00



DRAWING HOUSE OF HIBIYA

Under the theme of "Experiencing Nippon's Terroir," they sublimate truly delicious ingredients delivered from carefully selected "terroirs (soils)" throughout Japan. Although it is a French and Italian restaurant, its health and beauty lunch is popular because of its focus on vegetable dishes. It is located in Midtown Roppongi, where you can enjoy shopping and a park with a large lawn in a calm and fashionable environment.

<https://drawing.restaurant/>

<Adress>

Tokyo Midtown Hibiya 6F, 1-1-2 Yurakucho,
Chiyoda-ku, Tokyo

<Business Hours>

11:00-22:00 (21:00LO)



ITALIAN RESTAURANT NEAR GINZA



AROMA FRESCA

A renowned restaurant in Ginza that offers Italian cuisine that is a trinity of aroma, presentation, and taste. As the name of the restaurant means "fresh and cool aroma," the dishes, which bring out the best of the ingredients, pleasantly stimulate the senses with their aroma that wafts from the moment they are delivered to the table. The fine and enchantingly beautiful dishes and warm hospitality will leave everyone in a dreamy state of mind by the time dessert is served. Please enjoy the gorgeous dishes that have been meticulously calculated from the temperature to the timing.

<http://www.aromafresca-afsa.com/>

<Adress>

GINZA TRECIOUS 12F, 2-6-5 Ginza, Chuo-ku, Tokyo

<Business Hours>

Day 11:30 ~ 15:00 (L.O13:00)

Night 17:30 ~ 23:00 (L.O20:30)

GYUNTA MARUNOUCHI

Located on the 5th floor of the KITTE Building directly connected to Tokyo Station. A famous okonomiyaki and Korean-style teppan-yaki restaurant that has been a popular in Kobe for 50 years. The best seats are at the counter in front of the large teppan where the food is dynamically grilled. Enjoy the heat, sound, and aroma of the grill. The window seats overlooking Tokyo Station are also available only at the Marunouchi restaurant.

https://salt-group.jp/shop/gyunta_marunouchi/

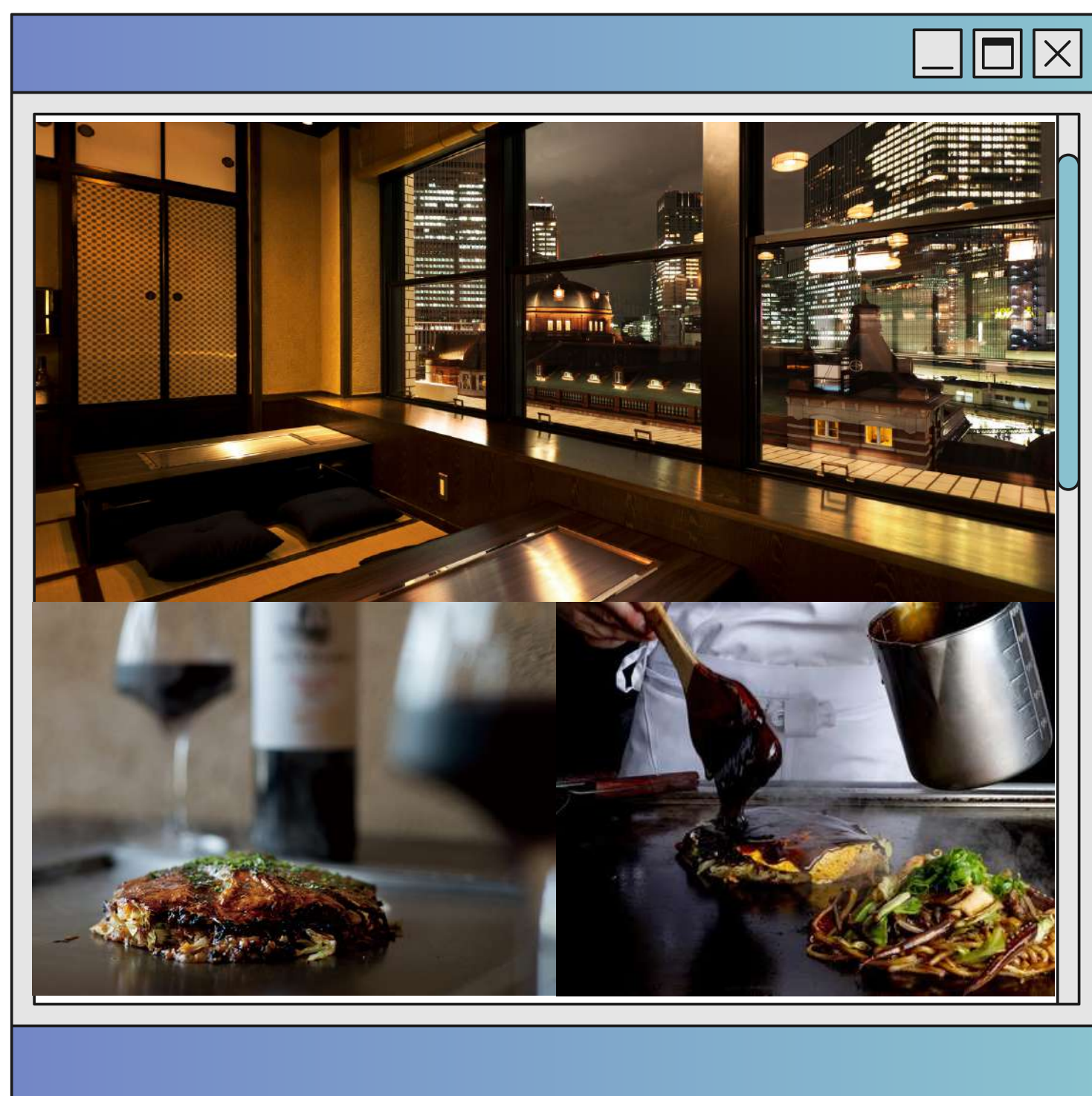
<Address>

KITTE 5F, 2-7-2 Marunouchi, Chiyoda-ku, Tokyo

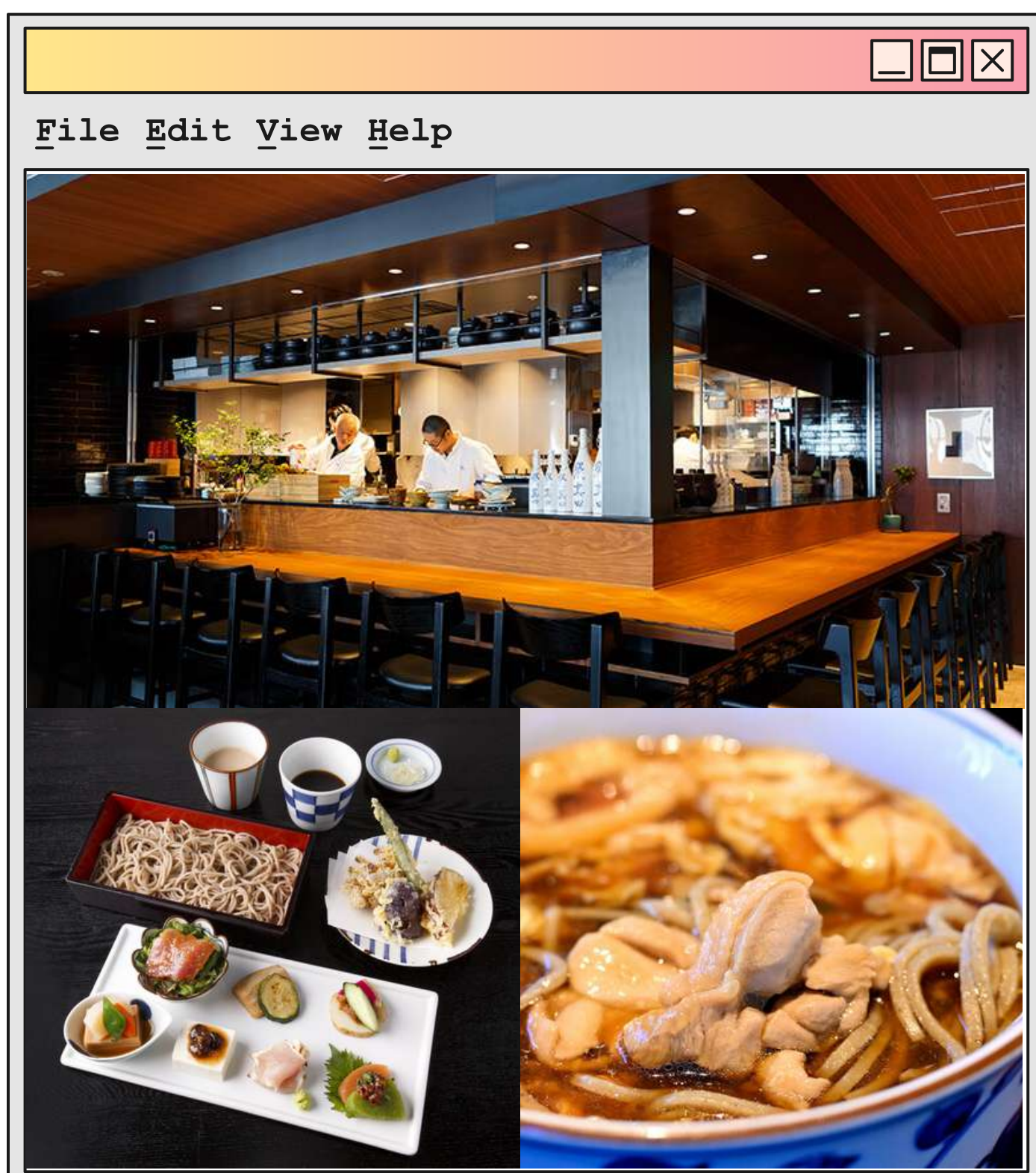
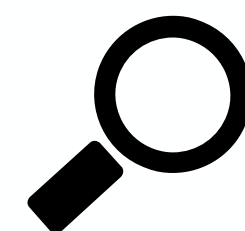
<Business Hours>

Lunch 11:00-15:00(LO14:30)

Dinner 17:00-22:30 (LO 21:30)



JAPANESE RESTAURANT IN GINZA



SANADA

Soba noodle shop in Ginza SIX (department store, 2 minutes walk from Ginza Station). Soba and tempura made with delicious vegetables imported from Nagano Prefecture and buckwheat flour are popular. You can also enjoy a glass of sake produced in Nagano Prefecture, and you are sure to have a quality time. We also recommend buying dessert after dinner, as there are numerous places to buy delicious sweets in the basement floor of Ginza SIX.

<https://ginza-sanada.com/>

<Address>

3F, 5-6-5 Ginza, Chuo-ku, Tokyo

<Business Hours>

11:00-22:00(L.O.21:00)

IZARIYA GINZA

They offer authentic Tosa prefecture traditional flavors in Ginza. The restaurant's name, "Izariya," is a word in the Tosa dialect meaning "Take your time!" Please relax to your heart's content without worrying about the time. They have created a relaxing space with a Japanese theme inside the restaurant. You will enjoy their monthly specialties that capture the season as only Japanese cuisine can.

http://www.izariya.com/top_ginza.html

<Adress>

B1F Ginza 2112 Building, 2-11-2 Ginza, Chuo-ku, Tokyo

<Business Hours>

Evenings 18:00-22:00 (Last entry at 20:00)

Closed: Sunday



JAPANESE RESTAURANT IN GINZA



KANETANAKA GINZA

The restaurant features a traditional Japanese *kuikiri kappo* style, which allows diners to closely observe the process of preparing *kaiseki* cuisine. You will surely enjoy the course that starts with the first five kinds of side dish for a sake drink. The restaurant's simple, Japanese-style design allows you to concentrate on the food. The restaurant is so famous that even Japan's Prime Minister, Kishida, has frequented the restaurant, so reservations are a must.

<https://www.kanetanaka.co.jp/restaurant/an/>

ANGELO

Chef has worked part-time at French and Italian restaurants since he was a teenager, and trained in Tokyo to study Italian cuisine. His style is not limited to Italian cuisine, but he is interested in various genres and is always trying to incorporate new things. This restaurant, which stands like a hideaway in the basement of a building in the Ginza corridor district, gives you excitement even before you eat. The gently lit lights and white-based interior create a luxurious atmosphere. Enjoy wine and Italian fusion cuisine.

<https://www.skco.co.jp/angelo/index.html>

<Address>

B1F Pacific Ginza Building, 7-2-20 Ginza, Chuo-ku, Tokyo

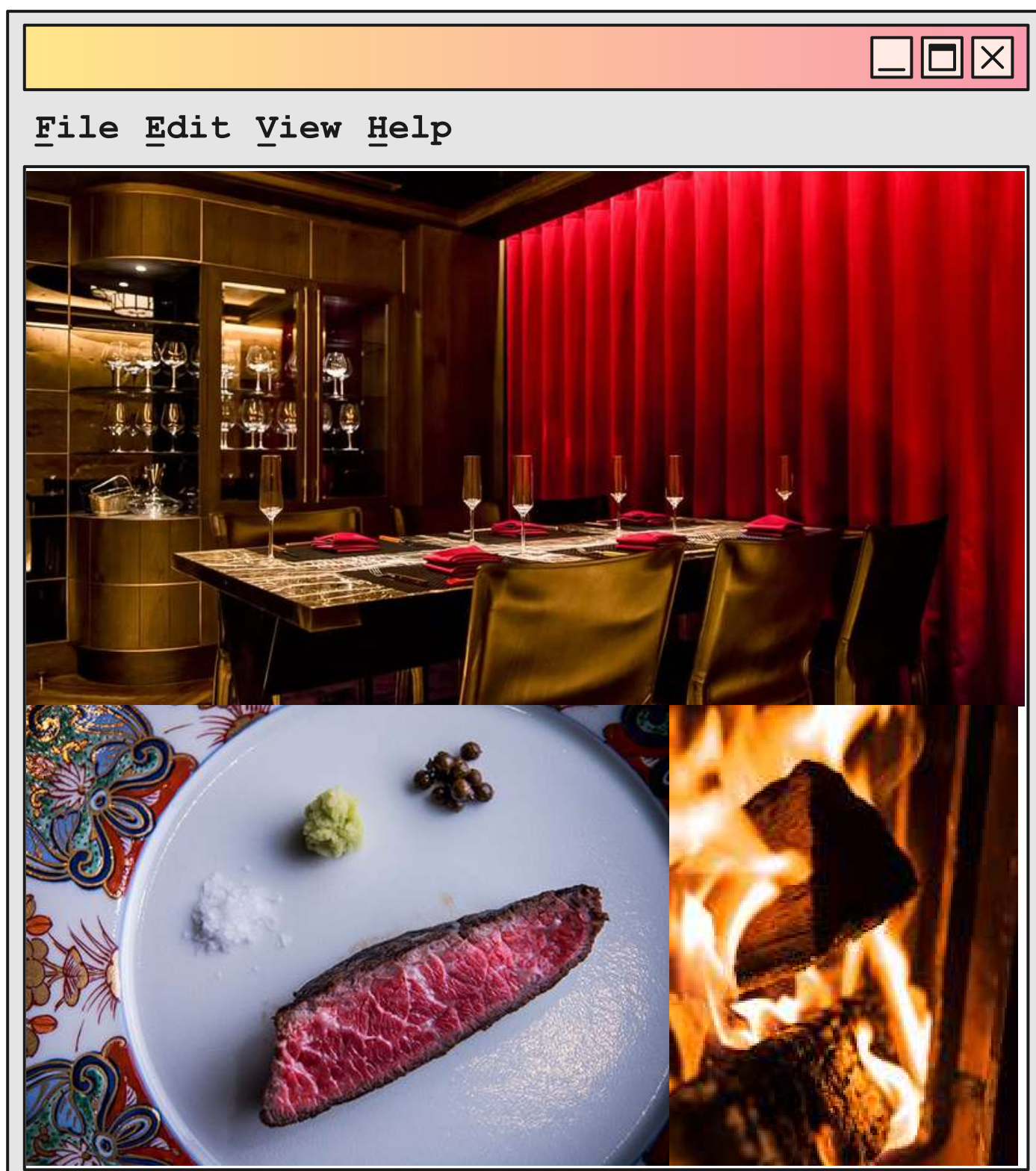
<Business Hours>

Mon - Thu, Sat, Sun: 17:00 - 23:30

Fri: 17:00 - 27:00 (L.O.26:00)



FUSION RESTAURANT IN GINZA



MAKIYAKI GINZA ONODERA

A new type of French cuisine created from a wood flame that has won a star in the "Michelin Guide Tokyo 2021". One of the spirited restaurants where you can enjoy wood-fired cooking, which is currently the focus of much attention, with a new sensation. Chef has experience in a variety of genres, from French to Japanese cuisine, and aims to create innovative wood-fired dishes based on modern French cuisine.

※Reservations are required at least three days in advance.

<https://onodera-group.com/makiyaki/>

<Address>

Sunlit Ginza III-9F, 5-14-14 Ginza, Chuo-ku, Tokyo

<Business Hours>

Dinner 18:00-22:00 (L.O.20:00)

Lunch 12:00-15:00 (L.O.13:00)

BENOIT TOKYO

Benoit Tokyo is a traditional French brasserie-style restaurant. The cuisine is prepared using seasonal ingredients carefully selected by the chef, and the essence and techniques of French cuisine are used to create delicious dishes. The chef is Alain Ducasse, a leading figure in the French culinary world. The restaurant's décor is sophisticated and classical.

<https://www.benoit-tokyo.com/>

<Address>

La Porte Aoyama 10F, 5-51-8 Jingumae, Shibuya-ku, Tokyo

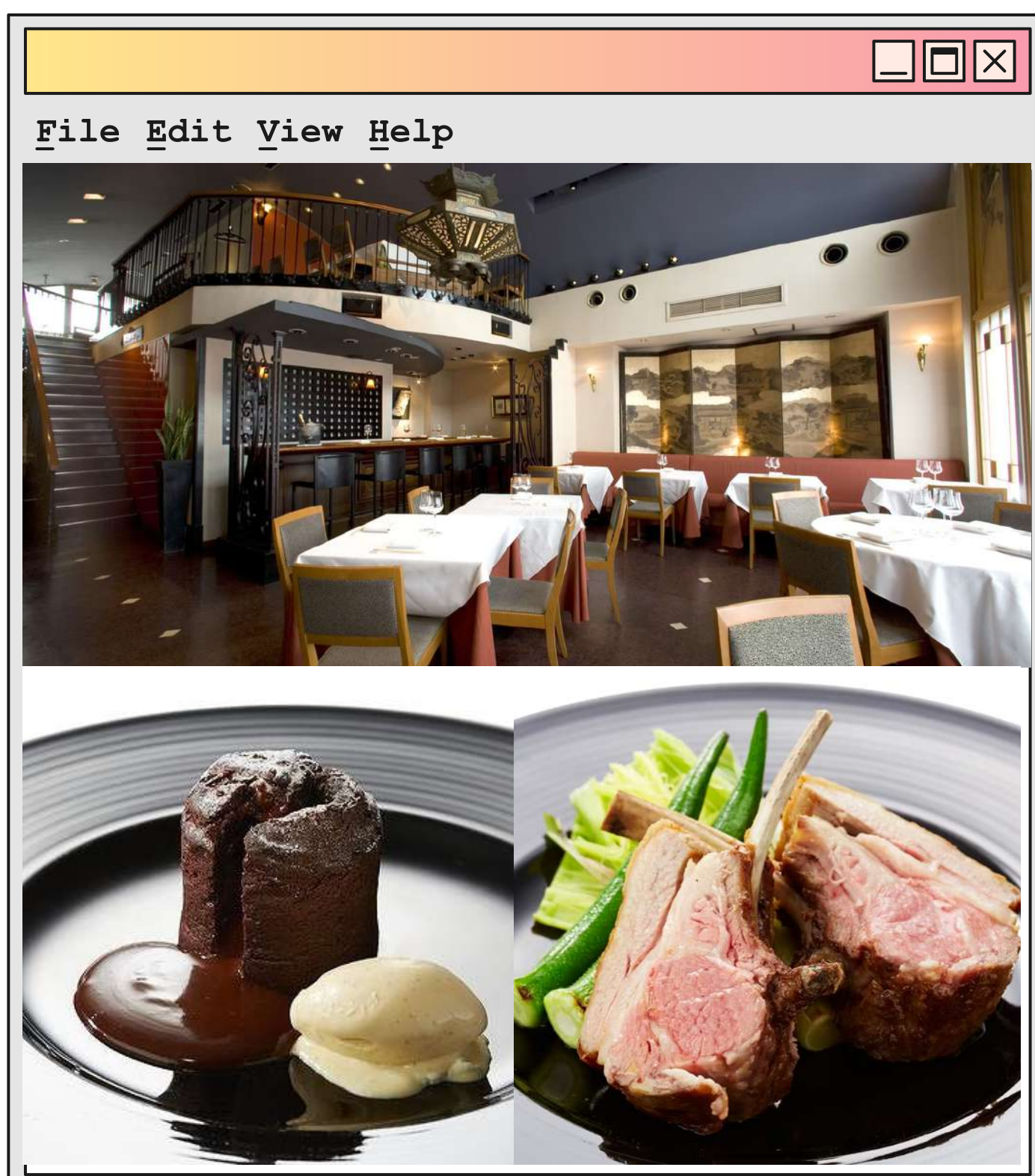
<Business Hours>

11:30 - 15:30(14:00L.O)

17:30 - 22:30(20:30L.O)



FRENCH RESTAURANT IN SHIBUYA



CHINOIS

Chinois is a place where you can enjoy wine and food in a relaxed atmosphere and have a pleasant time. Please enjoy the nostalgic "chinoiserie" oriental atmosphere of the restaurant, a wide selection of wines by the glass, and approximately 800 carefully selected wines, along with their original cuisine that blends Japanese and Western flavors. Folding screens, hanging lanterns, storehouse doors, and transoms from the Edo and Meiji periods are displayed throughout the store, along with hanging lights by Daum Nancy and Rene Lalique.

<https://www.chinois.jp/shibuya/>

<Address>

8F A2 Bldg., 28-4 Udagawacho, Shibuya-ku, Tokyo

<Business Hours>

Mon - Sat: 18:00 - 2:00 (L.O. 24:30)

Sun. Holidays: 18:00 - 24:00(L.O.22:30)

BAR RANSEN HANARE

Enjoy a quiet adult bar time in a hideaway space at Hotel New Otani. BAR RANSEN Hanare is located next to the Japanese restaurant "Kioicho Aisen" in Hotel New Otani. In this adult hideaway space where the warmth of wood heals you, you can enjoy Aisen's cuisine and over 200 kinds of wines and cocktails carefully selected by the sommelier. Reserve it for an adult women's party or at the end of a date for a quiet and enjoyable time.

<https://www.newotani.co.jp/en/tokyo/restaurant/ransen-hanare/>

Address: Hotel New Otani The Main,
4-1 Kioi-cho, Chiyoda-ku, Tokyo



BAR LIST AROUND ROPPONGI

GINZA BAR RECOMMENDATION
AROUND ROPPOGI, AZABU



TUSK

A dramatic evening with bubbles an impressive space with a long counter. TUSK is located on the first floor of Roppongi Hills West Walk. The 10-meter long counter is eye-catching, symbolizing a dramatic and sophisticated space reminiscent of Central New York, London, or Sydney. You can enjoy a full range of drinks and food in a space that looks as if it has been cut out of a scene from an overseas drama.

https://www.roppongihills.com/en/gourmet_shops/0147.html

<Address>

West Walk 1F, 6-10-1 Roppongi, Minato-ku, Tokyo

BAR SHAKE

A supreme authentic bar in Ginza, a perfect place to make your debut. Bar Shake is located in the basement of Sukiya-dori in Ginza. The space, stripped of superfluous decorations and created in pursuit of a comfortable atmosphere, is exactly what the word "authentic" means. Enjoy an unforgettable evening with a drink prepared by the famous bartender Mr. Furudado and others.

<http://www.barshake.jp/>

Address: B1F Nishichichi Kaikan, 7-3-15
Ginza, Chuo-ku, Tokyo



BAR LIST AROUND ROPPONGI

GINZA BAR RECOMMENDATION
AZABU, GINZA BAR RECOMMENDATION
ROPPONGI AROUND



CITABRIA BAR

A hidden bar in Nishi-Azabu. The entrance to this quaint four-story building tucked away in Nishiazabu is auto-locked, and you must punch in a code to enter. At first glance, it appears to be a members-only bar, but if you call the phone number written at the bottom, you will be given a PIN number and be able to enter. Inside the bar, each floor has a different taste, with sofas for couples, couches for large groups, and a counter for individuals. The rooftop is a photogenic space with small sofas, a pool, and a beautiful night view. Call ahead before stopping by, as reservations are required.

Address: 2-26-4 Nishiazabu, Minato-ku, Tokyo
TEL: +81 50-5597-4510



OMO3 TOKYO AKASAKA

BY HOSHINO RESORT

OMO3 Tokyo Akasaka by Hoshino Resort blends Japanese elements with modern design, allowing you to experience Japanese tradition and modern comfort. Rooms are comfortable and stylishly designed, with tatami floors and unique Japanese artwork. A full range of amenities and high quality bedding are also provided to ensure a comfortable stay. The resort also offers healing spa facilities. You can relax and enjoy traditional Japanese hot springs and massages. Tokyo tours are also available for guests only.

-3 min from Akasaka Sta

-15 min walk from Ana InterContinental Hotel Tokyo

-Double room 13182 yen(\$92.9)/night

<https://hoshinoresorts.com/en/hotels/omo3tokyoakasa/>

HOTEL LIST AROUND AKASAKA

- Akasaka-mitsuke: Akasaka-mitsuke is a historic plaza that dates back to the Edo period and was a cornerstone of Japan's modernization. Here you will find beautiful gardens and historical buildings.
- Akasaka Detached Palace: Akasaka Detached Palace was once used as the Imperial Palace and is now open to the public. The expansive grounds include beautiful gardens and traditional buildings, and visitors can enjoy the scenery of each season.
- Akasaka Sacas: Akasaka Sacas is a large complex of shopping, restaurant, and entertainment facilities. Here, visitors can enjoy the latest fashions and gourmet foods.



AKASAKA/ROPPONGI

LIVEGRACE AKASAKA

APARTMENT HOTEL

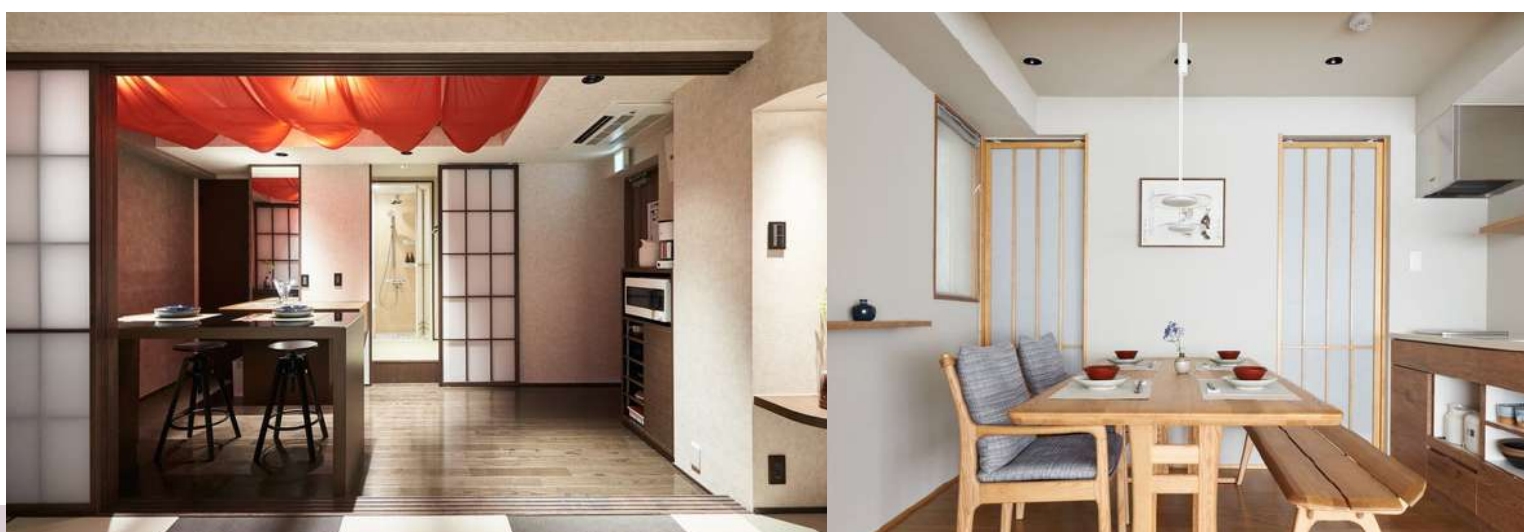
The four-story building offers a sophisticated and modern Japanese lifestyle with attention to detail in spatial design. Rooms are approximately 45 to 50 square meters in size, offering comfort and space rarely found in the bustling center of Tokyo. The top-quality design of the dining space and fully equipped kitchen make it ideal for extended stays with friends and family. Access to Akasaka and Tameike-Sanno Stations within 6-8 minutes and nearby tourist attractions; supermarkets, drugstores, convenience stores, and international cuisine within 5-10 minutes for convenient living.

-7 min walk from Tameike Sanno Station

-5 min walk to ANA InterContinental Hotel Tokyo

-Standard Single room: 50,000 yen (\$348.6)

<https://livegrace.co/akasaka.html>





MIMARU TOKYO AKASAKA

With the theme of "stay as you live", the hotel offers cooking utensils and a full range of amenities, as well as free rental items. All rooms are designed to be comfortable for 4 or more people with a kitchen, living and dining space, making it possible to have a comfortable mid- to long-term stay. The kitchens are equipped with tableware and cooking utensils. We recommend purchasing food ingredients and having home parties. A number of rooms with Japanese-style beds are available.

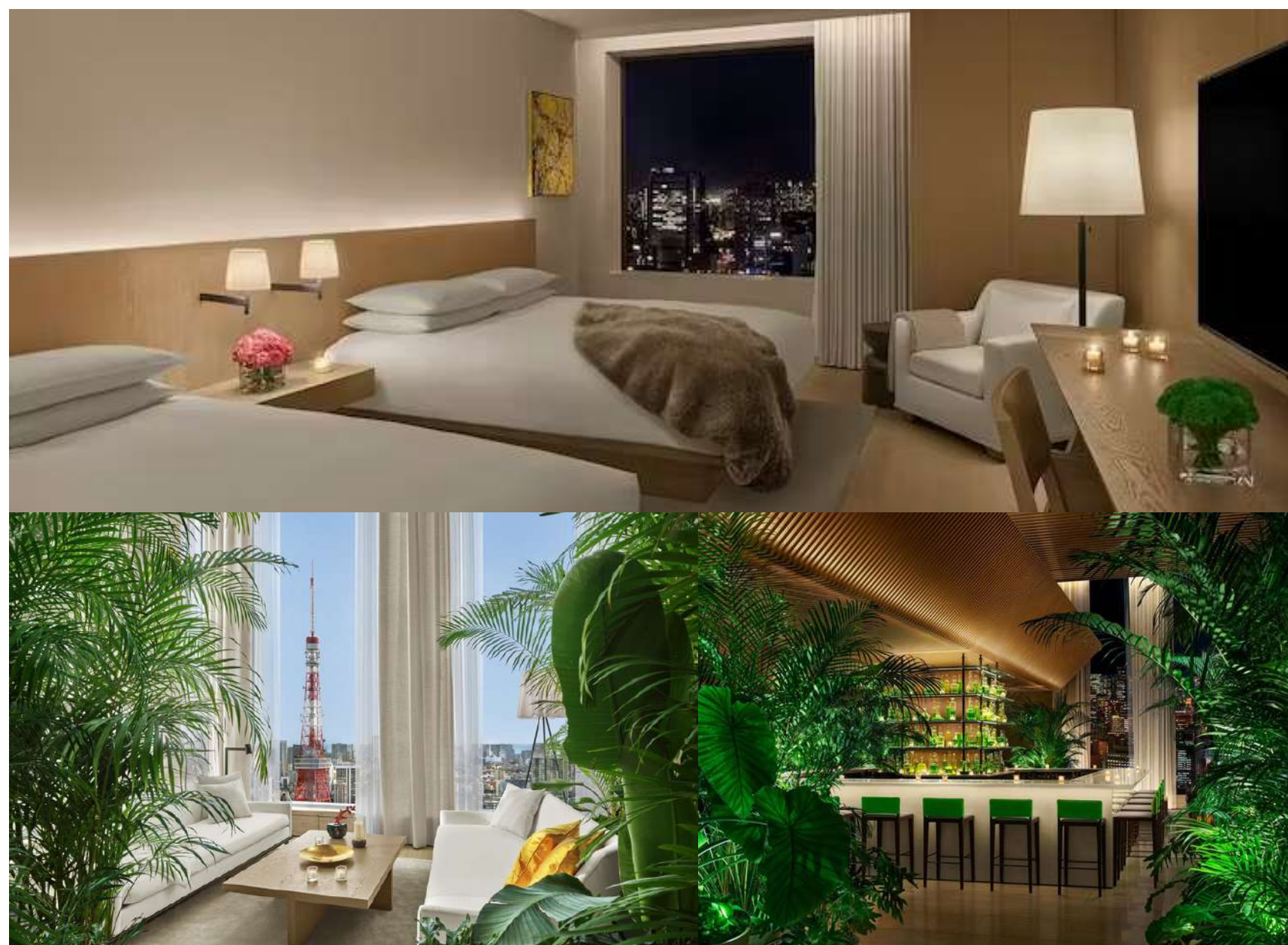
- 7 min walk from Tameike Sanno Station
- 15 min walk to [ANA InterContinental Hotel Tokyo](#)
- Standard Single room: 50,000 yen (\$348.6)
- <https://mimaruhotels.com/jp/hotel/akasaka/>



TOKYO EDITION TORANOMON

Tokyo Edition Toranomon is a truly tailor-made hotel that embodies the splendor of East and West. Guests can experience the true charm of Tokyo without ever leaving the hotel. Ian Schrager, founder of the legendary Studio 54 nightclub in New York and an early adopter of the "designer hotel" concept, and world-renowned architect Kengo Kuma have joined forces to create Tokyo Edition Toranomon, a next-generation luxury experience! The Tokyo Edition Toranomon is a next-generation luxury experience.

- 2 min walk from Kamiyacho Sta
- 9 min walk to [ANA InterContinental Hotel Tokyo](#)
- Deluxe King room: 109,000 yen (\$759.60)
- <https://www.marriott.com/ja/hotels/tyoet-the-tokyo-edition-toranomon/overview/>



HENNA HOTEL AKASAKA

Henna Hotel Tokyo was recognized by Guinness World Records as the world's first hotel where robots work. As its name suggests, it features a novel and unique concept. At check-in, a robot will be in charge of the reception desk to assist with a smooth check-in process. The guest rooms are also unique, with futuristic designs and innovative artwork. Henna Hotel Tokyo is an attractive lodging facility that offers a novel concept and unique experience. For foreign travelers, it offers a different kind of enjoyment from their usual hotel stay.

- 3 min walk from Akasaka Sta
- 9 min walk to [ANA InterContinental Hotel Tokyo](#)
- Standard room: 21,120 yen (\$147.18)
- <https://www.hennahotel.com/akasaka/>



ALL DAY PLACE SHIBUYA

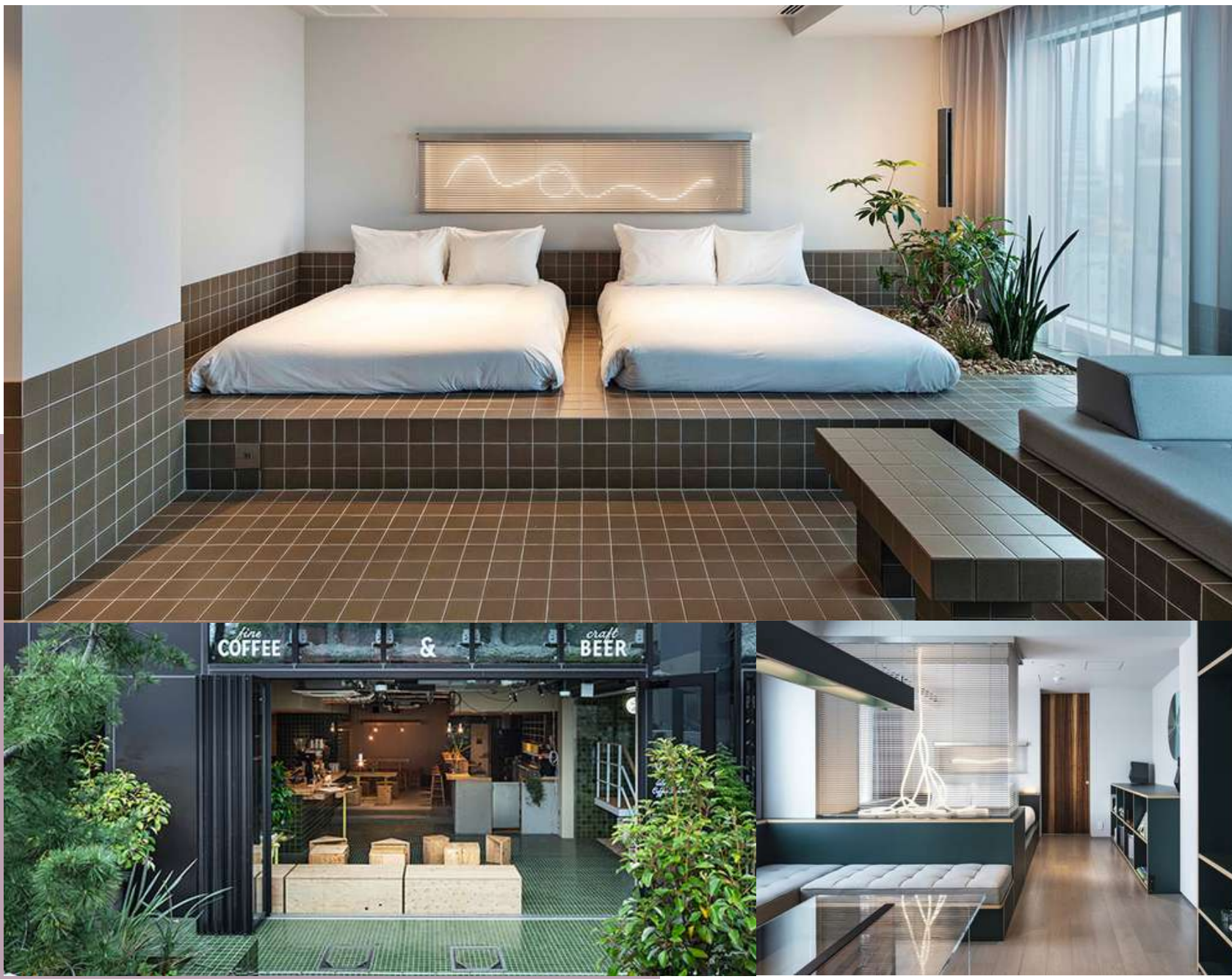
All day place shibuya is a 2-minute walk from Shibuya Station. The hotel is located halfway up the hill from Meiji-dori to Aoyama-dori. You can access to unique towns such as Shibuya, Harajuku, Aoyama, and Omotesando on foot. Miyashita Park (where shopping, restaurants, parks, etc. are concentrated) is also nearby, making this hotel very convenient.

-2 min from Shibuya Sta

-Take the Ginza Line from Shibuya Station and get off at Tameike-Sanno Station. (180yen / 22min)

-Double 25,500yen (\$177.69)

<https://www.uds-hotels.com/all-day-place/>



HOTEL LIST AROUND SHIBUYA

• Tokyu Hands

A specialty store specializing in household goods ranging from kitchen and living room items, stationery, to do-it-yourself items. Original orders are also available for those pursuing their own unique living space.

Address: 12-18 Udagawa-cho, Shibuya-ku, Tokyo

• Shibuya Center Street

It consists of five streets, including the main street and Inokashira-dori. With a wide variety of restaurants and youth-oriented fashion stores, the area is crowded with visitors from inside and outside of Japan throughout the year.

• Urasando Garden

A complex of renovated old private houses. Japanese culture and food with good taste are gathered here, including a Japanese-style cafe, a pancake shop using domestic rice flour, and stores selling goods.

Address: 4-15-2 Jingumae, Shibuya-ku, Tokyo



SHIBUYA



TRUNK (HOTEL)

TRUNK (HOTEL) is the center of a new style of social contribution, "Socializing". "Socializing" means "to live life on one's own terms, in one's own way, without overdoing it, and with a social purpose. Although located in the busy Shibuya area, this boutique hotel in a quiet area has many tricks to make your stay enjoyable. Please actually stay and enjoy the activities and experiences that are exclusive to guests.

-10 min walk from Shibuya Station

-Take the Ginza Line from Shibuya Station and get off at Tameike-Sanno Station.(180yen / 26min)

-Standard Single room: 50,000 yen (\$348.6)

<https://trunk-hotel.com/>



THE AOYAMA GRAND HOTEL

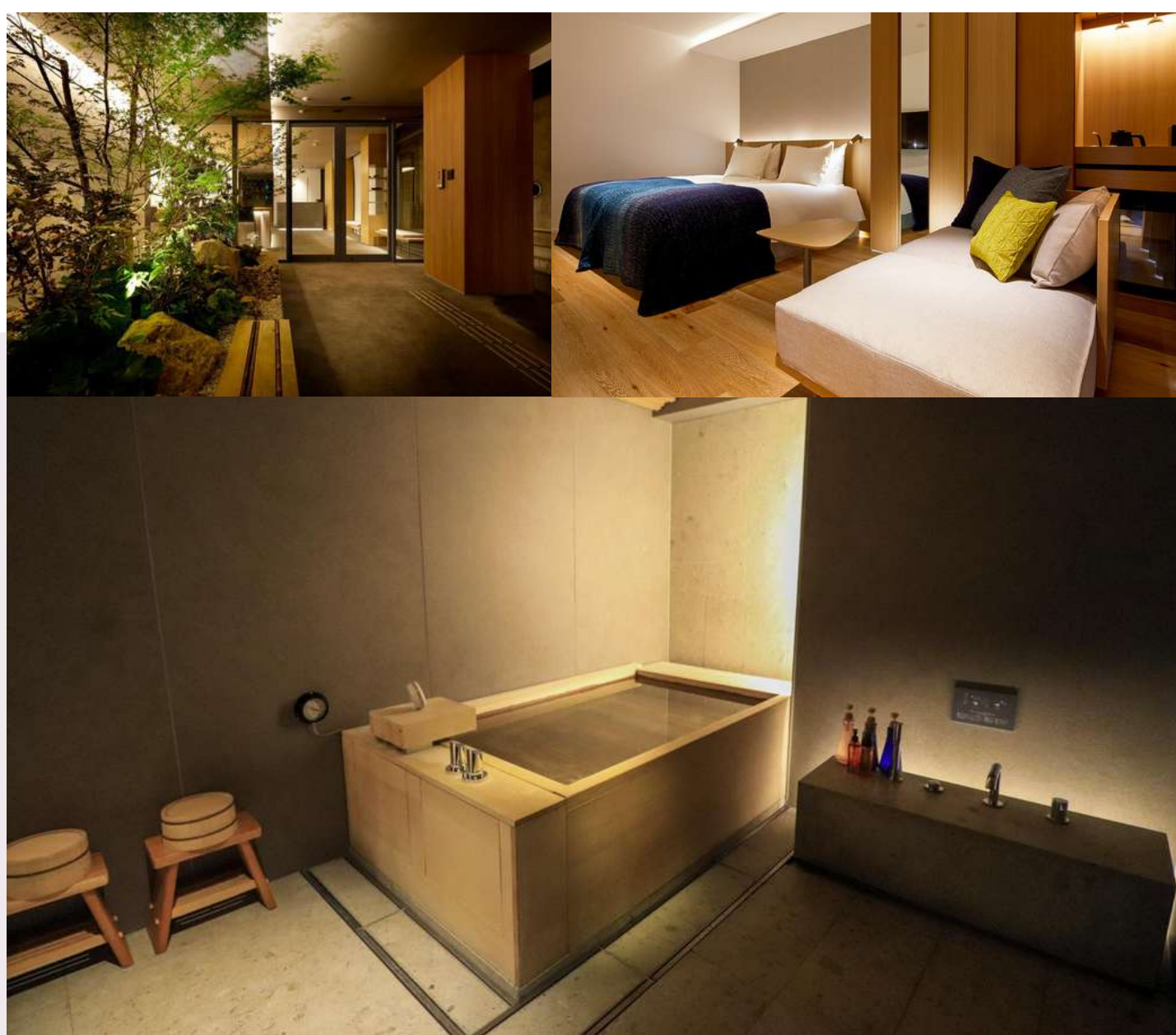
The hotel is located in the middle of Aoyama, where people from all over the world gather and a center of fashion and culture. While the exterior of the hotel is stylish and magnificent, the guest rooms are also in a mid-century modern style and beautiful. Enjoy the experience of staying in a spacious and luxurious space with carefully selected interiors, as if you were living in the hotel.

- 3 min walk from Gaienmae Station
 - Take the Ginza Line from Gaienmae Station and get off at Tameike-Sanno Station.(180yen / 15min)
 - Deluxe King Bed room: 118,000 yen (\$822.80) (free mini bar included)
- <https://aoyamagrand.com/>

HOTEL LIST AROUND GINZA MITSUI GARDEN HOTEL PREMIER

This high-rise hotel offers the best view in Ginza from every room, as the guest rooms are located on the 17th to 25th floors. A beautiful night view spreads out before your eyes. Every corner of the room is designed for deep relaxation, including bedding designed for a good night's sleep, a bathroom with a night view, and original bath amenities.

- 6 min from Shinbashi Sta
 - Take the Ginza Line from Shimbashi Station and get off at Tameike-Sanno Station.
 - Moderate: 35,500yen (\$247.32)
- <https://www.gardenhotels.co.jp/ginza-premier/>



TSUKI TOKYO

Located in Tsukiji, an area famous for its sushi and fish, TSUKI Tokyo is a hotel that serves as a base for travelers to learn about the "Japanese spirit" that underlies Japanese culture, offering an experience that will make you a Japan connoisseur, where you can learn about Japanese aesthetic sensibilities and stimulate your senses. For example, most rooms have baths made of cypress, allowing guests to experience a uniquely Japanese way of life.

- 4 min walk from Tsukiji Station
 - From Shintomicho Station, take the Yurakucho Line to Nagatacho Station, transfer to the Namboku Line at Nagatacho Station, and get off at Tameike-Sanno Station. (180yen / 25min)
 - Deluxe twin room: 25,600 yen (\$178.5)
- <https://www.tsukihotel.com/>



THE GRAND HYATT TOKYO

A luxury hotel located in Roppongi Hills, a landmark Roppongi district that includes more than 200 stores, restaurants, cinemas, museums, and an observation deck. It is a "lifestyle destination hotel" that offers a variety of experiences in a dynamic, global environment. The modern and sophisticated hotel features more than 200 artworks, 10 restaurants and bars, and spa facilities, providing an elegant escape from the hustle and bustle of the city. The hotel is conveniently located for access to major areas such as Ginza and Shibuya, and is highly recommended for both business and leisure travelers.

- 4 minute walk from Roppongi Station
 - Conference center: From EX Theater Roppongi-mae, take the "To1" bus bound for Shibuya Station and get off in front of Akasaka ARK Hills. (210yen/ 12 min)
 - Twin room 107000 yen(\$755)/night
- <https://www.hyatt.com/en-US/hotel/japan/grand-hyatt-tokyo/tyogh>

HOTEL LIST - LUXURY HOTEL -

PALACE HOTEL TOKYO

More than half of the rooms at the Palace Hotel Tokyo are equipped with balconies, a rarity in the city center. Enjoy a variety of flavors with all five senses, from the terrace where you can enjoy the water and greenery, to the sophisticated nighttime views of Marunouchi. Each of the Palace Hotel Tokyo's 10 restaurants, bars, and lounges offers a unique atmosphere in a different design space, allowing you to choose the one that best suits your purpose.

- 3min walk from Kokkaigijidoumae Sta
 - Conference center: Take the Chiyoda Line from Otemachi Station and get off at Kokkai-gijidomae Station. (180yen/ 20min)
 - Deluxe King: 161920 yen/night (1142\$)
- <https://www.palacehoteltokyo.com/>



THE RITZ-CARLTON, TOKYO

Located in Tokyo Midtown in Roppongi, Tokyo, directly connected to the Roppongi subway station. This luxurious location occupies the upper nine floors of the Midtown Tower, the symbolic tower of Tokyo Midtown, which is lined with green spaces, museums, and stores covering an area of approximately 4 hectares. The Ritz-Carlton, Tokyo offers 245 guest rooms that fuse Japanese aesthetics with sophisticated luxury, a variety of dining options, and a spa that provides blissful relaxation, all with unique and heartwarming hospitality.

- 3 min walk from Roppongi Station
 - From Roppongi yonchome, take the "To1" bus bound for Shibuya Station and get off in front of Akasaka ARK Hills. (210yen/ 11 min)
 - King 1 Bed room: 298000yen (2102\$)
- <https://www.ritzcarlton.com/ja/hotels/tyorz-the-ritz-carlton-tokyo/overview/>



DENGAMA

You can purchase pottery from famous potteries such as Arita-yaki in Saga, Kutani-yaki in Ishikawa, and Shigaraki-yaki in Shiga at reasonable prices. Japanese style, patterned vessels lined up according to the season.

Address: 1-4-3 Nishi Asakusa, Taito-ku, Tokyo

MUST BUY SOUVENIRS FROM TOKYO

KEY WORD:

POPULAR, MODERN



GACHA-GACHA

Gacha-gacha (Capsule toy) is a play where one randomly obtains toys and goods in small capsules or boxes. There are several facilities in Tokyo with over 500 gacha-gacha machines lined up in several locations.

<https://bandainamco-am.co.jp/en/others/capsule-toy-store/>



DONGURI KYOWAKOKU

A store where you can buy official Ghibli motif goods. The products will be the best souvenir for Ghibli fans. For example, you can actually buy the earring and necklace set worn by the main character Howl in "Howl's Moving Castle. Various goods such as T-shirts and key chains are available for each movie.

<https://benelic.com/donguri/shop-list/>



MATCHA KITKAT

Kit Kat's matcha green tea flavor is undeniably popular among foreign tourists. In Tokyo, it is sold at nearby convenience stores, airports, and mostly everywhere.

<https://nestle.jp/kitkat/products>



GOMATAMAGO

The black sesame paste and black sesame jam are covered with castella sponge cake. Then, a coat of white chocolate is added- as you can see, this is a cute egg-shaped treat. The exquisite harmony, brought on by four different layers, is truly enjoyable.

<https://tokyotamago.com/item-en/index.html>



MUST BUY SOUVENIRS FROM TOKYO

KEY WORD:

MODERN, TRADITIONAL, SWEETS



ANBATAYA

The bean paste is made with a generous amount of Hokkaido "Erimo azuki" beans, and smooth butter cream is added afterwards. An and butter's harmony make the most delicious combination. This is a hybrid product that combines the goodness of the past with the essence of today's western-style sweets.

<https://anbataya.jp/>



HONEY GORGONZOLA COOKIES

These cookies are made with a dough kneaded with Spanish rosemary honey and sandwiched with rich Gorgonzola chocolate. This product is a perfect snack for alcohol such as white wine.

<https://tokyomilkcheese.jp/en/>



IKKOAN WARABIMOCHI

Ichikouan is owned by Chikara Mizukami, who has taught the beauty of Japanese sweets to patissiers from around the world, including Spain, Italy, and France. Ikkoan's warabi dough, made from only 3-4% of the starch extracted from the underground stems of the bracken, is not available all year round. The mochi often sell out early, so if you want to be sure to purchase one, we recommend that you make a reservation by phone.

Address: 3-15, Koishikawa 5-chome, Bunkyo-ku, Tokyo

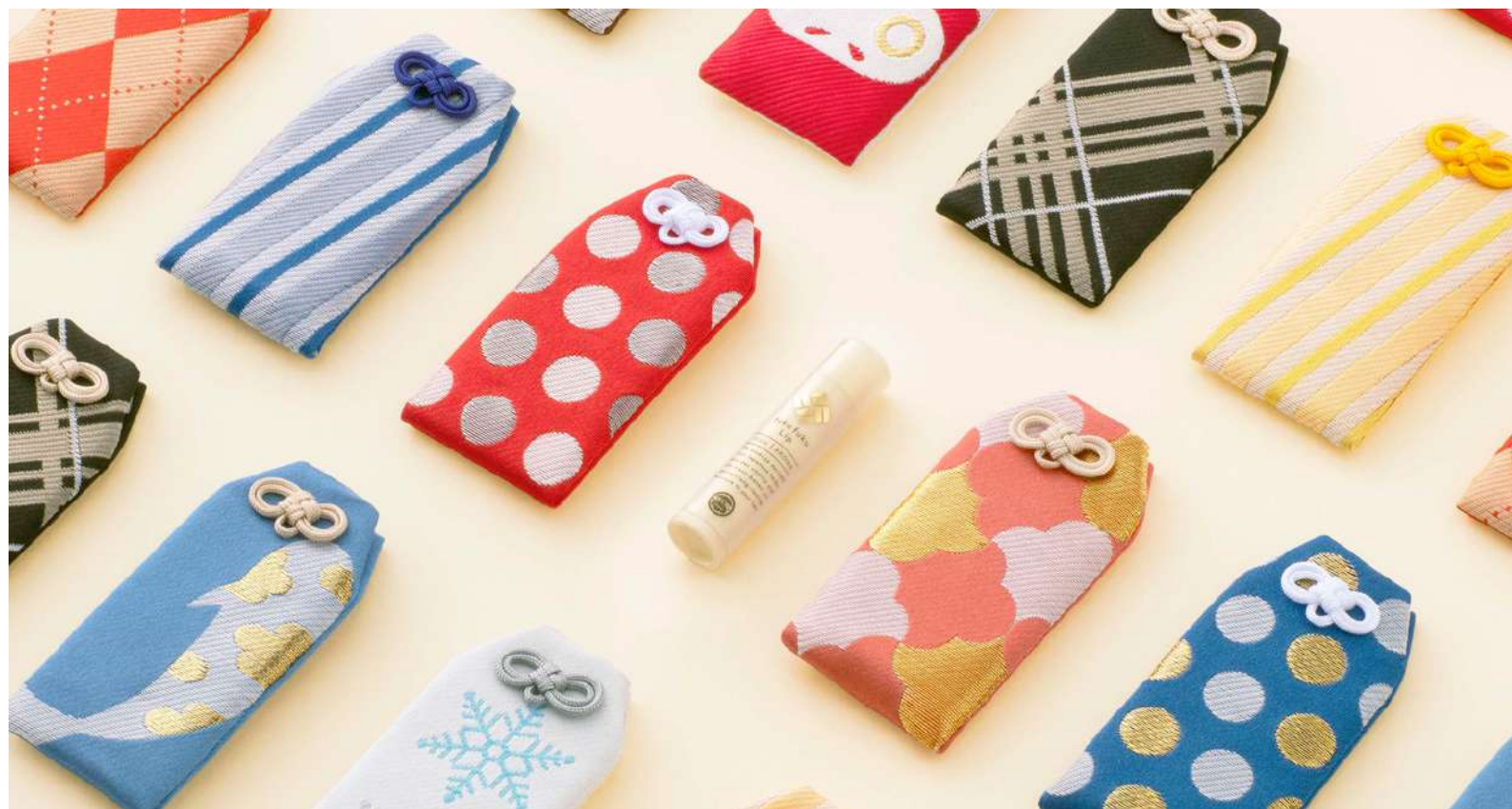


LIP MONSTER KATE

This new lipstick is packed with Japanese technology that is natural but does not fall off at all even if you wear it all day. It is very convenient for busy women because they don't have to reapply their lipstick every time they put it on. Buy one for your wife or daughter and they will surely appreciate it. Available at drugstores, etc.

MUST BUY SOUVENIRS FROM TOKYO

KEY WORD:
SOPHISTICATED, FASHION GOODS



FUKUFUKU LIP

This product, which contains lipstick in a cute good-luck charm bag, is eye-catching in its cuteness. Bright colors such as red, pink, and lavender, and patterns such as dots, cats, and rabbits are modern and pop. You will want to carry it around with you by attaching it to your bag or putting it in your pocket. The lip balm inside has a subtle yuzu scent. Available at Tokyu Hands, Loft, and directly managed stores at Tokyo Sky Tree Soramachi.



KIMONO HAZUKI

The products handled at the store are mainly antique and recycled kimonos. There is a wide variety of colors, patterns, and types, so you are sure to find a kimono to your liking. Prices are also reasonable, with kimonos averaging 8,000 yen (or 4,000 yen and up), making it easy for even beginners to get their hands on one.

Address: 1F Daikichi Market, 2-2-24 Izumi, Suginami-ku, Tokyo



ITOYA

Stationery and general fashion goods store established in 1904. The store offers stationery with delicate and fashionable Japanese designs, and it is fun just to browse through the store. Collaboration goods such as cute characters are always held depending on the season.

Address: 7-15, Ginza 2-chome, Chuo-ku, Tokyo